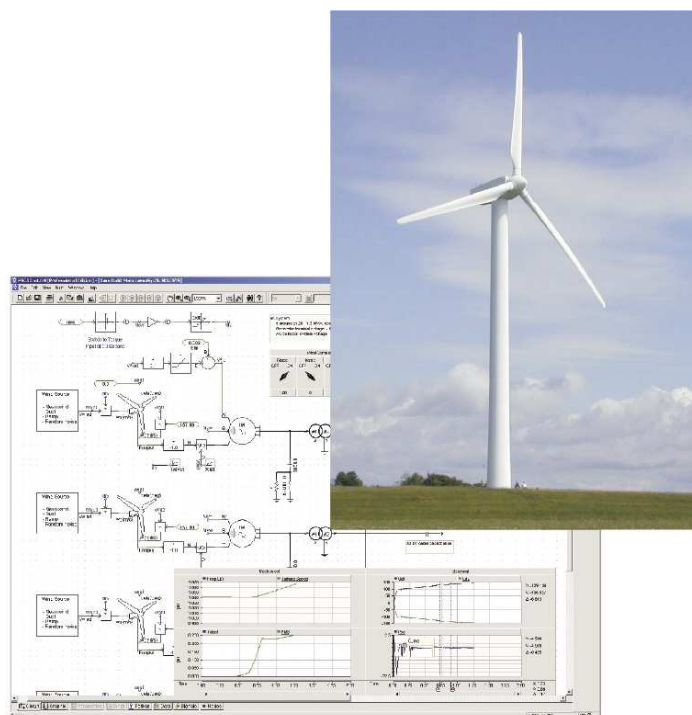


PSCAD: Power System Simulation

PSCAD[®]

Version 4.2

WIND TURBINE APPLICATIONS TECHNICAL PAPER



Copyright – January 2006

PSCAD is a registered trademark.

PSCAD software	COPYRIGHT MANITOBA HVDC Research Centre Inc.
PSCAD tutorials	COPYRIGHT CEDRAT

This technical paper was edited 9 January 2006
Ref.: KP05-A-EN-01/06

CEDRAT
15 Chemin de Malacher- Inovallée
38246 MEYLAN Cedex
FRANCE
Phone: +33 (0)4 76 90 50 45
Fax: +33 (0)4 56 38 08 30
Email: cedrat@cedrat.com
Web: www.cedrat.com

TABLE OF CONTENTS

PART A: INTRODUCTION 1

1. Introduction	3
2. PSCAD components	5
3. Modelled structure	7
4. Simulations performed	9

PART B: BUILD THE MODEL 11

5. From the wind to the Synchronous Generator	13
5.1 The Wind Source	14
5.2 The wind turbine component	15
5.2.1 Theoretical study	15
5.2.2 Cp curve with PSCAD standard model	16
5.2.3 Computation of parameters	17
5.2.4 Define the Wind turbine parameters	18
5.3 Wind turbine governor component	19
5.3.1 Theoretical study	19
5.3.2 Define the Wind governor parameters	20
5.4 The synchronous generator	21
5.5 Turbine generator connection: Simulation at rated load	24
Simulation parameters & analysis :	24
6. AC/DC/AC : Power and Frequency conversion	27
6.1 Diode Rectifier	28
6.2 Overvoltage protection	30
6.3 DC bus	31
6.3.1 Build the DC bus	31
6.3.2 Model validation	32
6.4 6-Pulse Thyristor inverter	34

6.4.1	Presentation.....	34
6.4.2	Voltage collapse limitation	36
6.4.3	Voltage regulation.....	37
6.5	Connection to the network	40
7.	The distribution grid	43
7.1.1	Definition of the grid.....	43
7.1.2	Load Flow Simulation	47

PART C: SIMULATE **49**

8.	Constant Wind Study	51
8.1	Structure the complete model	51
8.2	Constant wind study.....	53
9.	Fault Analysis.....	55
9.1	Default at Node 3	56
9.1.1	Without DG	56
9.1.2	With DG connected at node 1	57
9.2	Default at Node 2	59
9.2.1	Without DG	59
9.2.2	With DG connected at node 3	59
9.3	Conclusion	61
10.	Variable wind study	63
10.1	Dynamic pitch control.....	63
10.2	Passive pitch control simulation	67
10.3	Comparison of passive and dynamic pitch control	69
11.	Wind farm.....	71
11.1	From a single wind turbine to a wind farm	72
11.1.1	Change the structure of the model	72
11.1.2	Modifications in the synchronous generator.....	73
11.1.3	Modifications in the transformer	74
11.1.4	Modifications in the grid.....	74
11.2	PWM Regulation drives.....	75
11.2.1	Principles	75
11.2.2	Generation of the triangular waveform	75
11.2.3	Generation of the reference.....	79
11.2.4	Generation of the firing pulses for the GTO inverter	83
11.3	Simulation	85

PART D: APPENDIX **87**

12.	References.....	89
-----	-----------------	----

PART A: INTRODUCTION

1. Introduction

Recently, wind power generation has attracted special interest, and many wind power stations are in service throughout the world. In wind power stations, induction machines are often used as generators, but the development of new permanent magnet generators, the improvement of the AC-DC-AC conversion and its advantages for output power quality make other solutions possible. A recent solution is to use a permanent magnet generator with variable speed and a conversion stage, which is the case studied in this technical paper.

The aim of this tutorial is to familiarize users with **PSCAD** software through a complete example. **PSCAD** contains powerful tools for the wind turbine simulation.

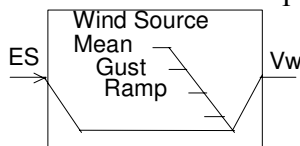
Part B describes the step-by-step building of the entire energy generation cycle for one wind turbine. All components are dimensioned and connected to each other. Intermediate simulations validate the model.

In Part C, different power turbine regulation types are simulated and analyzed, and fault situations on the grid are studied. Finally, an entire wind farm is modelled.

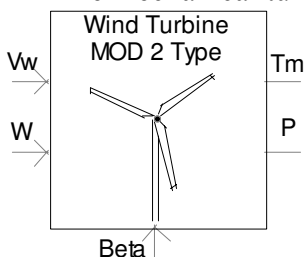
2. PSCAD components

In **PSCAD**, the complete wind generator cycle is composed of :

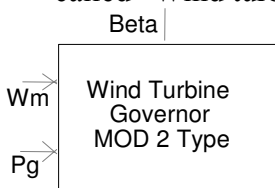
The wind source component:



- The mechanical turbine, represented by a component called “wind turbine”.



- The regulation governor of the turbine’s output power. This regulation can be passive (passive pitch control) or dynamic (dynamic pitch control). The difference is whether or not the blades turn around their longitudinal axis. Both kinds of regulation can be simulated by a component called “Wind turbine governor”.



- The other components are standard ones: synchronous machine, transformer, rectifier, inverter, Control System, Modelling Functions (CSMF),....

All these components will be detailed in Part B.

3. Modelled structure

Part B contains:

- A theoretical study of wind turbine generation
- The dimensioning of each PSCAD component with intermediate simulations in order to compare results with the theory and to validate the model.

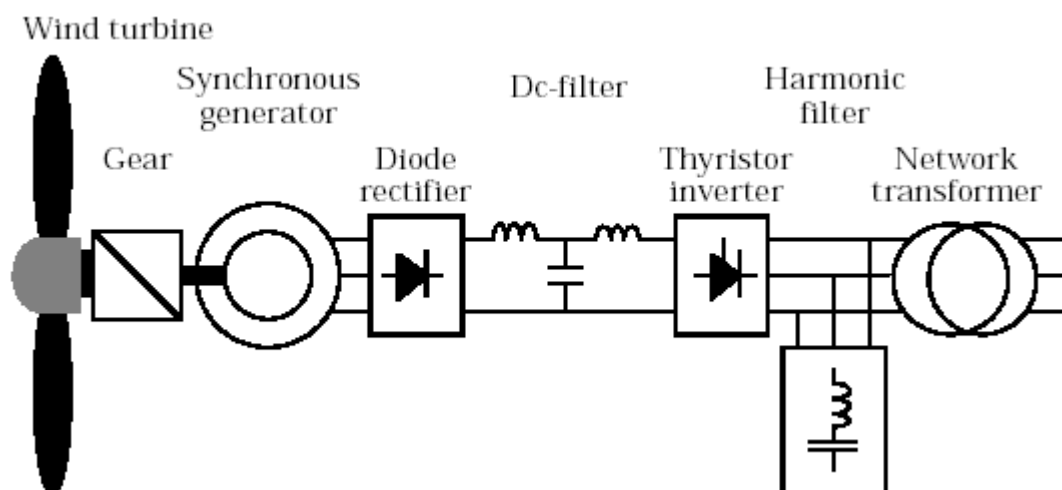
This paper makes the choice to define a **wind turbine connected to a permanent Magnet Synchronous Generator with 100 pole pairs**. The connection to the grid is then performed through a full AC/DC/AC converter and a step up transformer. The main advantage of this strategy is to allow to remove the gear box in the wind turbine.

Of course different technologies can be fully simulated in PSCAD:

- **Induction generatore direct connection**
- **Doubly Fed Induction Generator**

Some examples of the implementation of this models in PSCAD can be asked to CEDRAT or your local PSCAD distributor.

In this document, the overall sequence can be summarized by the following diagram:



4. Simulations performed

In part C, the global sequence is achieved through the connection of all components presented in part B and the simulation results are analyzed:

- The power produced with a constant mean wind speed (13 m/s)
- The power produced with variable wind speed and passive pitch control
- The power produced with variable speed and dynamic pitch control
- The differences between the two types of pitch control
- The wind turbine's impact on a distribution network in case of faults on the network
- The wind farm model and the impact of a wind farm connection on a transmission network

PART B: BUILD THE MODEL

5. From the wind to the Synchronous Generator

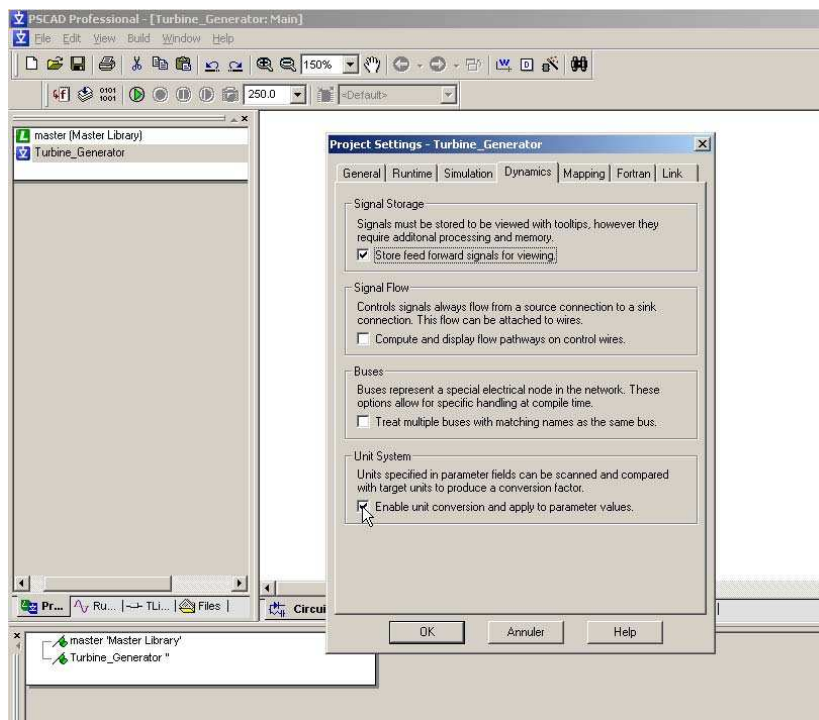
In the first sections (5.1 to 5.5) , the following components will be described and dimensioned:

- Wind Source component
- Wind Turbine component
- Wind Governor
- Synchronous Generator

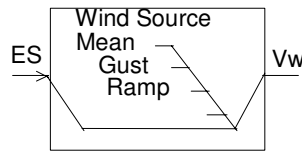
Then, a first simulation will be done to check the dimensioning.

First create a new PSCAD project : Turbine_generator.psc

In the project Settings, enable the unit conversion system (available in PSCAD 4.2) to have the possibility to use different units than PSCAD default units:



5.1 The Wind Source



I / O	Definition	Description
ES	Input External value	An external value created by the user can be added to the value internally generated.
Vw	Output Wind Speed (m/s)	Wind speed in m/s.

Table 1: INPUT / OUTPUT for wind source component

This component can be found in the folder “**Master Library/Machines**”.

The Wind Source component simulates every wind condition:

- mean wind speed
- periodic gust with a sinus form
- ramp
- noise
- damper for all the preceding conditions

For wind turbine, the three following wind characteristics are important:

- The mean wind speed:
The rated characteristics of the turbine and the generator are determined according to the mean wind speed. Economic studies are also based on this speed. In general, the mean wind speed is approximately 13 m/s.
- The cut-in speed:
At speeds higher than the cut-in speed, mechanical brakes are released in order to let the turbine turn. In general, the cut-in speed is equal to 4 m/s.
- The cut-out speed:
At speeds higher than the cut-out speed, the turbine rotation is stopped in order not to damage the blades of the turbine. In general, the cut-out speed is approximately 25 m/s.

For dynamic simulations, the wind speed is simulated throughout a day; thus, the wind speed must vary from the cut-in speed to the cut-out speed in order to study the wind turbine’s reaction for all wind conditions. In this study, a startup below the cut-in speed and a stop above the cut-out speed are not considered; the wind speed is limited to between 4m/s and 25m/s.

First, we will consider a constant wind at 13m/s. Copy a wind source component in your project and parameterize it as shown in Figure 1:

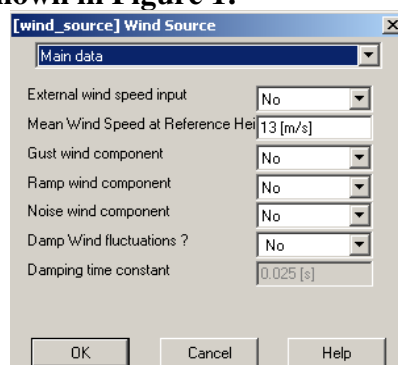
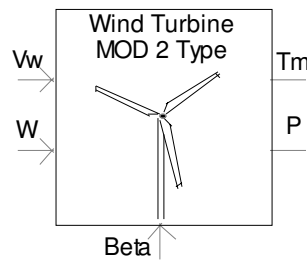


Figure 1: Wind source characteristics

5.2 The wind turbine component



I / O	Definition	Description
W	Input	Mechanical rotation speed of the turbine (rad/s).
Beta	Input	Angle of the blades (deg)
Vw	Input	Wind Speed in m/s.
Tm	Output	Torque of the turbine (p.u.)
P	Output	Power of the turbine (p.u.)

Table 2: INPUT / OUTPUT for wind turbine component

This component can be found in the folder “**Master Library/Machines**”.

5.2.1 Theoretical study

The kinetic energy of the air through the rotor blades is:

$$E_c = \frac{1}{2} m W_s^2$$

The theoretical power we can obtain from a wind turbine is:

$$P_{th} = \frac{1}{2} \rho S W_s^3$$

with ρ = air density (1.22 kg/m³)

S = rotor surface (m²)

W_s = Wind speed (m/s)

In practice, the power is smaller because the wind speed behind the hub is not 0.

This efficiency is characterized by the Betz coefficient (given by Bernoulli's equations), also called the Power Coefficient **Cp**:

$$C_p = P_{real}/P_{th}$$

$$C_p = \frac{1}{2} (1-a^2) (1+a)$$

a = Wind speed behind the rotor / wind speed in front of the rotor

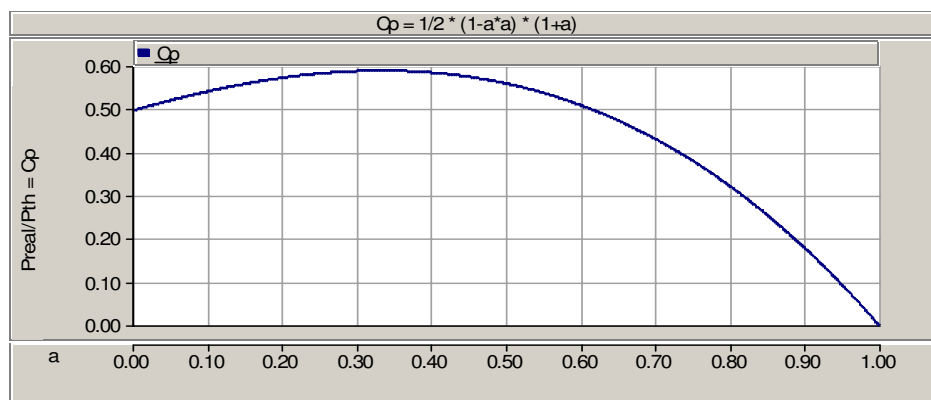


Figure 2 : Theoretical $C_p(a)$

5.2.2 Cp curve with PSCAD standard model

In this study, a standard rotor with 3 blades is used.

With a 3 or 2-blades wind turbine, the power coefficient will be smaller than its theoretical value.

In the standard model of wind turbine available in the PSCAD Master Library, the Power Coefficient is defined with the following formula (model of PM Anderson [1]):

$$C_p = 0.5(\gamma - 0.022\beta^2 - 5.6) e^{-0.17\gamma}$$

$$\gamma = 2.237 * \text{Wind speed} / \text{hub speed}$$

β : incidence angle of the blade

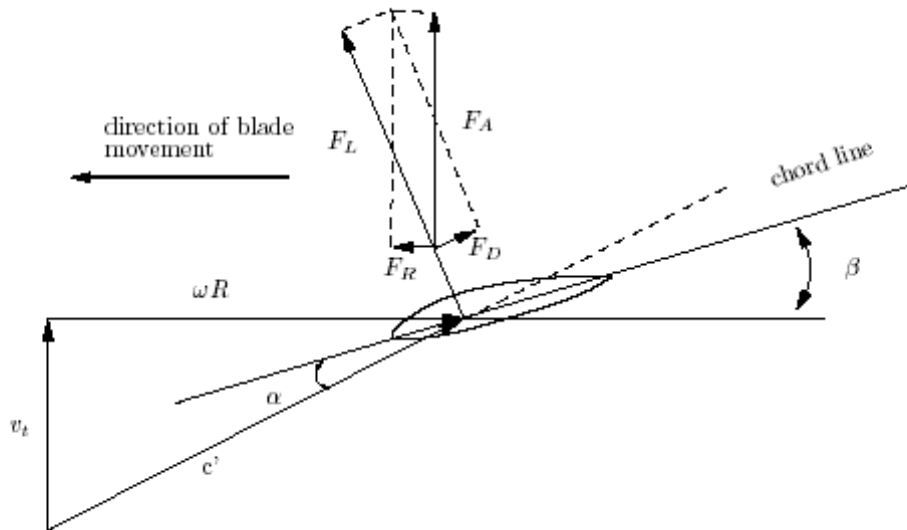


Figure 3: β angle

C_p is maximum at $\beta = 0$

The curve $C_p(\gamma)$ with $\beta = 0$ is shown below:

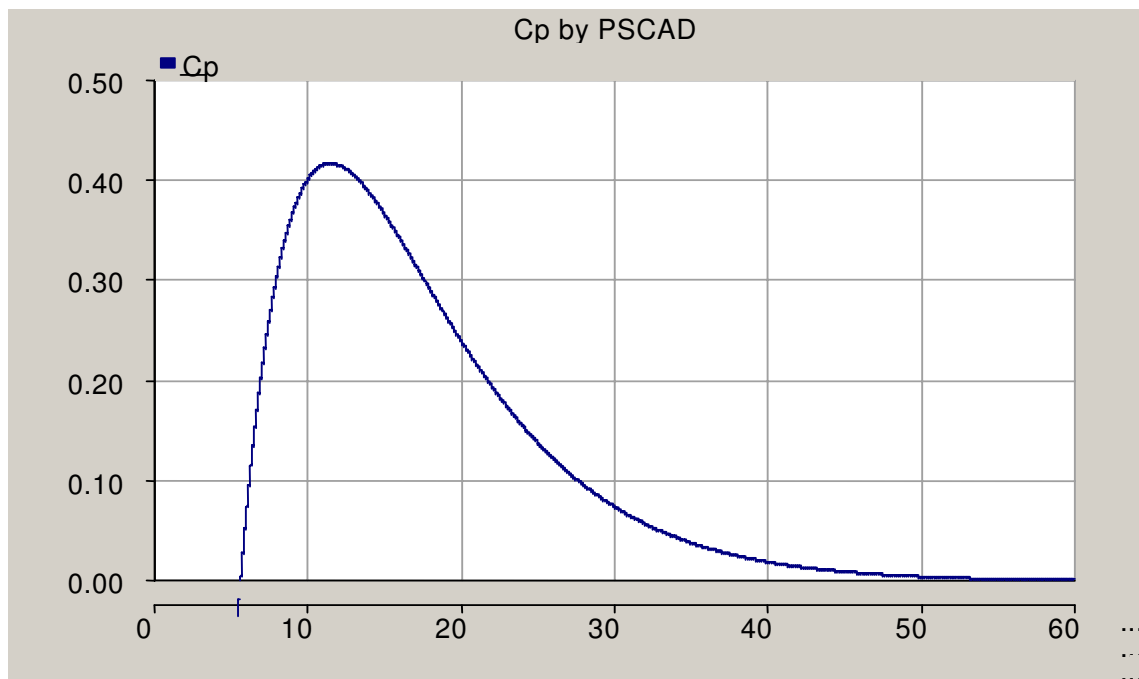


Figure 4: PSCAD $C_p(\gamma)$

5.2.3 Computation of parameters

The model's permanent magnet generator has the following characteristics:

Number of pole pairs	100
Rated speed at 50Hz	$2*\pi*f/100 = 3.1416 \text{ rad/s}$
Rated power	$S_n = 3 \text{ MVA}$
Rated voltage	0.69 KV
Xd	0.4 p.u
Rated current In	$I_n = S_n / (3*V_n) = 3000000 / (3*690) = 1450 \text{ A}$

Table 3: Synchronous machine characteristics

- **Cp computation at rated conditions:**

No gearbox → Hub Speed = PM Synchronous Generator rated speed

The nominal power must be reached at the mean wind speed : 13 m/s.

→ $\gamma = \text{WindSpeed} * 2.237 / \text{HubSpeed} = 13 * 2.237 / 3.1416 = 9.25$

→ **$C_p(\gamma = 9.25, \beta = 0) = 0.4$**

- **Turbine rated power:**

In general the turbine rating is 20% more powerful than the generator because of the friction in the mechanical cycle:

Rated power of the generator: $S_{\text{ngen}} = 3 \text{ MVA}$

→ Turbine Rated Power : **$S_{\text{n turb}} = 1.2 * 3 = 3.6 \text{ MVA}$**

- **Computation of the rotor radius and area:**

In PSCAD the power is given by the formula:

$$P = 0.5 * \rho * S * W_s^3 * C_p$$

with $C_p = 0.4$, $W_s = 13 \text{ m/s}$, $\rho = 1.22 \text{ kg/m}^3$

→ **$S = 6716 \text{ m}^2$**

→ **$R = 46.2 \text{ m}$**

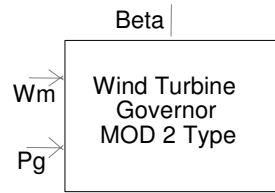
5.2.4 Define the Wind turbine parameters

Copy a wind turbine component in your case and define its parameter as following:

Parameter	Value
Generator Rated MVA	3 [MVA]
Machine rated angular mech. speed	3.14 [rad/s]
Rotor Radius	46.2 [m]
Rotor Area	6716[m*m]
Air density	1.225 [kg/m ³]
Gear box efficiency	1 [p.u.]
Gear Ratio - Machine/turbine	1
Equation for power coefficient	MOD 2

Figure 5: Wind turbine characteristics

5.3 Wind turbine governor component



I / O	Definition	Description
Wm	Input	Mechanical rotation speed of the turbine (rad/s).
Pg	Input	Output power of the turbine (p.u.)
Beta	Output	Angle of the blades (deg)

Table 4: INPUT / OUTPUT for Wind governor

This component can be found in the library “**Master Library/Machines**”.

5.3.1 Theoretical study

$$C_p = 0.5(\gamma - 0.022\beta^2 - 5.6) e^{-0.17\gamma}$$

The regulation of β enables the regulation of C_p and thus enables to control the output power of the turbine depending on wind conditions. Two regulation strategies exists and are described below:

- **Passive pitch control:**

The β angle is determined by the wind turbine builder to produce maximum energy for a predefined average speed. Below the mean wind speed, there is no angle control: C_p is not maximum. Above the mean wind speed, the blade profile creates turbulence in order to keep the rotation of the blades from increasing.

- **Dynamic pitch control:**

In this configuration, the blades can turn around their longitudinal axis. A power reference for the regulation system is given, and at each second the system turns the blades in order to regulate the output power as shown on the following curve:

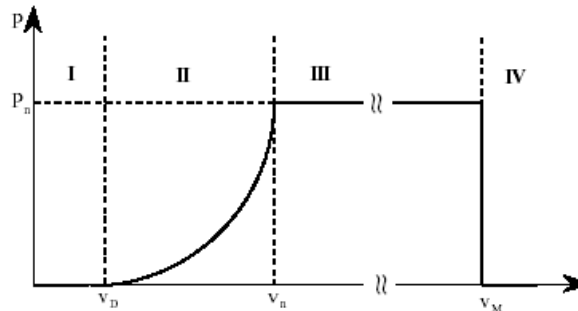


Figure 6: $P(V)$ characteristic

- **Zone I:** $V_{wind} < V_{cut-in} \rightarrow P = 0$ (the turbine does not turn)
- **Zone II:** $P < P_{rated} \rightarrow P = f(V)$ with $\beta = 0$
- **Zone III:** $P = P_{rated}$ with $\beta \neq 0$, P is kept at P_{rated} through the dynamic pitch control
- **Zone IV:** $V_{wind} > V_{cut-out} \rightarrow P = 0$ (The turbine is stopped with mechanical brakes)

5.3.2 Define the Wind governor parameters

Copy a wind governor component in your case and define its parameter as following::

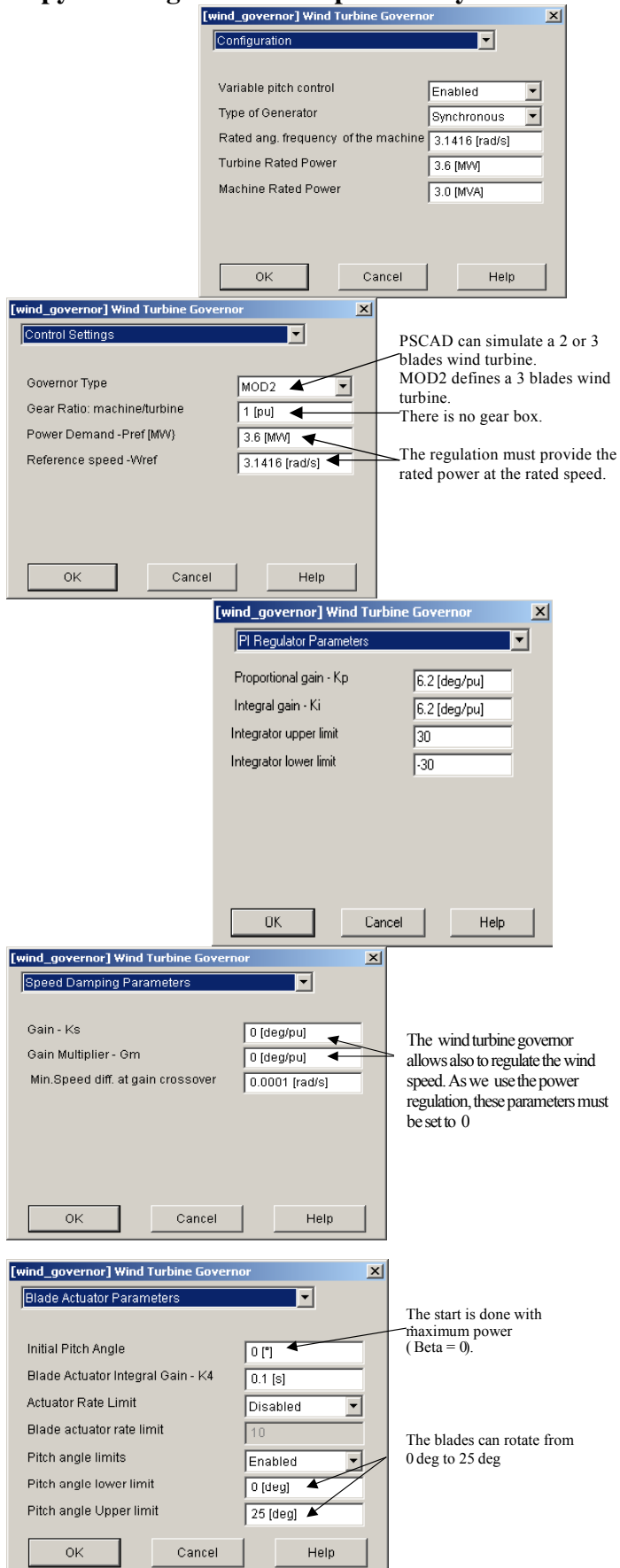
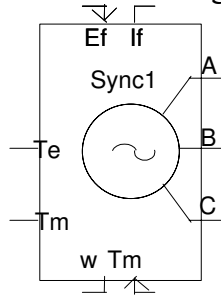


Figure 7: Governor characteristics

5.4 The synchronous generator

The synchronous generator is described with the following component:



I / O	Definition	Description
Ef	Input	The exciter voltage (p.u.)
Tm	Input, output	The mechanical torque (p.u.)
If	Output	The exciter current (p.u.)
Te	Output	The electrical torque (p.u.)
w	Output	The speed of the generator (p.u.)
A,B,C	Output	The voltage (KV)

Table 5: INPUT / OUTPUT Synchronous generator

The synchronous generator component can be found in the folder “**Master Library/Machines**”.

- Computation of parameters:**

In this study we use a permanent magnet generator, so the excitation is constant and equal to 1 p.u.:

Number of pole pairs	100
Rated speed at 50Hz	$2*\pi*f/100 = 3.1416 \text{ rad/s}$
Rated power	$S_n = 3 \text{ MVA}$
Rated voltage	0.69 KV
Xd	0.4 p.u
Rated current In	$I_n = S_n / (3*V_n) = 3000000 / (3*690) = 1450 \text{ A}$

Table 6: Synchronous machine characteristics

Note:

- p.u values: In PSCAD all the internal values are defined in p.u. Therefore, a new rated value will modify all the internal parameters, the user does not need to calculate all the new values.*
- Synchronous machine starting in PSCAD: PSCAD enables starting the simulation with the generator as a source or with the rotor speed constant. In this study, the startup is done with the mean wind speed and with the initial machine speed.*
- Modeling of a permanent magnet generator: To model a PM synchronous generator with a classical synchronous model we have chosen:*
 - A constant excitation voltage: 1 p.u.*
 - A large unsaturated transient time T_{do}' , which increases the field leakage: 10 s*
 - A very small unsaturated subtransient time T_{do}'' , which simulates the effect of a large damper resistance: 0.0001s*
 - An initial Field current equal to its permanent value*

Copy a synchronous generator component in your case and define its parameter as following:

[sync_machine] Synchronous Machine

Configuration

Machine name: PM GENERATOR

No. of Q-axis Damper Windings: One

Data Entry Format: Generator

Multimass interface:[Enables Speed Ctrl]: DISABLE

Armature Resistance as: Time-Cons

D-axis Saturation: Disabled

Type of settings for initial condition: Currents

Machine scaling factor?: No

Graphics Display: Single line view

[sync_machine] Synchronous Machine

Interface To Machine Controllers

Supply terminal conditions to exciter: None

Smoothing Time Constant: 0.02 [sec]

Output exciter initialization data?: No

Output governor initialization data?: No

Output speed: p.u.

[sync_machine] Synchronous Machine

Variable Initialization Data

Source[0] -> Machine[1] transition: 1

Lock-rotor[0] -> Normal mode[1] transition: 1

Enable/Disable P control of source

Initializing real power

Enable/Disable Inertia control

Inertia scaling factor

Damper friction factor

Factor for damping speed

Enable/Disable P control of Locked

Field Voltage multiplier

Disable/Enable Ef multiplication

[sync_machine] Synchronous Machine

Basic Data

Rated RMS Line-to-Neutral Voltage: 0.69 [kV]

Rated RMS Line Current: 1.45 [kA]

Base Angular Frequency: 314.16 [rad/s]

Inertia Constant: 6.3 [s]

Mechanical Friction and Windage: 0.02 [p.u.]

Neutral Series Resistance: 20 [p.u.]

Neutral Series Reactance: 0.0 [p.u.]

Iron Loss Resistance: 30 [p.u.]

Number of coherent machines: 1.0

Help

Figure 8: Synchronous machine characteristics

The figure displays three screenshots of the PSCAD Synchronous Machine dialog boxes, which are used to configure the generator model.

Generator Data Format

Parameter	Value
Armature Resistance [Ra]	0.002 [p.u.]
Armature Time Constant [Ta]	0.332 [sec]
Potier Reactance [Xp]	0.130 [p.u.]
D: Unsaturated Reactance [Xd]	0.4 [p.u.]
D: Unsaturated Transient Reactance [Xd']	0.3 [p.u.]
D: Unsat. Transient Time (Open) [Tdo']	10 [sec]
D: Unsat. Sub-Trans. Reactance [Xd'']	0.22 [p.u.]
D: Unsat. Sub-Trans. Time (Open) [Tdo'']	0.001 [sec]
D: Real Transfer Admit (Armat-Field)	1.0E+2 [p.u.]
D: Imag Transfer Admit (Armat-Field)	1.0E+2 [p.u.]
Q: Unsaturated Reactance [Xq]	0.510 [p.u.]
Q: Unsaturated Transient Reactance [Xq']	0.228 [p.u.]
Q: Unsat. Transient Time (Open) [Tqo']	0.85 [sec]
Q: Unsat. Sub-Trans. Reactance [Xq'']	0.290 [p.u.]
Q: Unsat. Sub-Trans. Time (Open) [Tqo'']	0.034 [sec]
Air Gap Factor	1.0

Initial Conditions

Parameter	Value
Terminal Voltage Magnitude at Time = 0-	1.0 [p.u.]
Terminal Voltage Phase at Time = 0-	0.0 [rad]

Initial Conditions if Starting as a Machine

Parameter	Value
Terminal Real Power at Time = 0- ; Out +	0.0 [MW]
Terminal Reactive Power at Time = 0- ; Out +	0.0 [MVAR]
Initial Rotor Angle ref: Stator	0.0 [rad]
D-axis Armature Current; In +	0 [p.u.]
Q-axis Armature Current; In +	0 [p.u.]
Initial Field Current	1 [p.u.]
Initial Machine Speed	1.0 [p.u.]

Output Variable Names

Name	Value
Name: Real Power; Out + (pu)	Pgene
Name: Reactive Power; Out + (pu)	Qgene
Name: Neutral Voltage (kV)	
Name: Neutral Current to Ground (kA)	
Name: Load Angle; Gen. + (rad)	
Name: Rotor Mechanical Angle (rad)	
Name: Internal Phase A Angle w.r.t. sin(wt) (rad)	
Name: Steady Electrical Torque (pu)	T_elec_c

Real/Reactive power pu output is based on base MVA of

☒ single machine

☐ total number of machines

The permanent magnets create the following starting conditions because the field is constant all the time and thus before the start of the simulation

Figure 9: Synchronous machine characteristics

5.5 Turbine generator connection: Simulation at rated load

Now connect all the components as below:

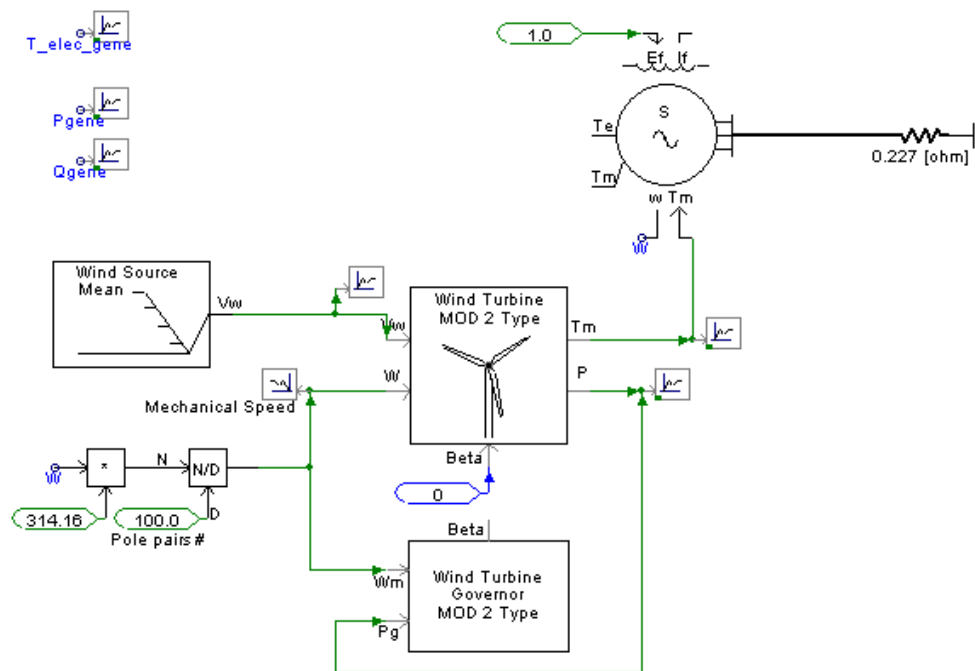


Figure 10: Turbine-generator connection

Note: Computation of the rated load

Wind speed = rated value = 13 m/s

β is forced to 0 in order to have the maximum power and The wind turbine delivers 3.6 MW:

$$P = 3 * V * I * \cos \varphi = 3 * V^2 * R / Z^2 = 3 * V^2 * R / (R^2 + X_d^2)$$

$$\text{with } X_d = 0.4 \text{ pu} = 0.4 * V_n / I_n = 0.4 * 690 / 1450 = 0.19 \Omega$$

The rated load of the generator is: $R = 0.257 \Omega$

Simulation parameters & analysis :

- Duration: 40s
- Time step: 100 μ s
- Plot step: 1000 μ s
- Startup method: Standard
- Scale Factors (to display T and P with real values and non pu values)

Variable Name	Scale Factor
Pgene	3
Qgene	3
Pturb	3
Wmech	1
Tturb	955000
T_elec_gen	955000

Table 7: Scale Factors for measured quantities

The evolution of curves follows the fundamental mechanical law:

- Turbine Torque – Electromagnetic Torque = $J \cdot dw/dt + f \cdot w$
 → during the starting, the Turbine torque is > To the Electromagnetic Torque: Speed increases.
- Turbine power is managed by the C_p value, which is a wind speed and a hub speed function.

In this example the wind speed is constant (13 m/s), thus, C_p is only a hub speed function.

As the speed increases, the power coefficient $C_p = 0.5(\gamma - 0.022\beta^2 - 5.6) e^{-0.17\gamma}$ decreases.

→ Turbine power decreases

- Final steady state : Turbine Torque – Electromagnetic Torque = $f \cdot w$

$T_{turb} = 1\,173\,000\text{ Nm}$

$T_{elecGene} = 1\,156\,000\text{ Nm}$

→ $f \cdot w = 1\,173\,000 - 1\,156\,000 = 17\,000\text{ Nm}$

$w = 3.06\text{ rad/s}$

and $f = 0.02\text{ pu} = 0.02 \cdot 955\,000 = 19\,100\text{ Nm}$

→ $f \cdot w = 19\,100 \cdot 3.06 / 3.14 = 18\,600\text{ Nm} \approx 17\,000\text{ Nm}$

- The turbine power corresponds to the rated power (3.6 MW)
- The generator power starts from 0 to the turbine rated power
- The speed is approximately the rated speed (3.06 rad/s)

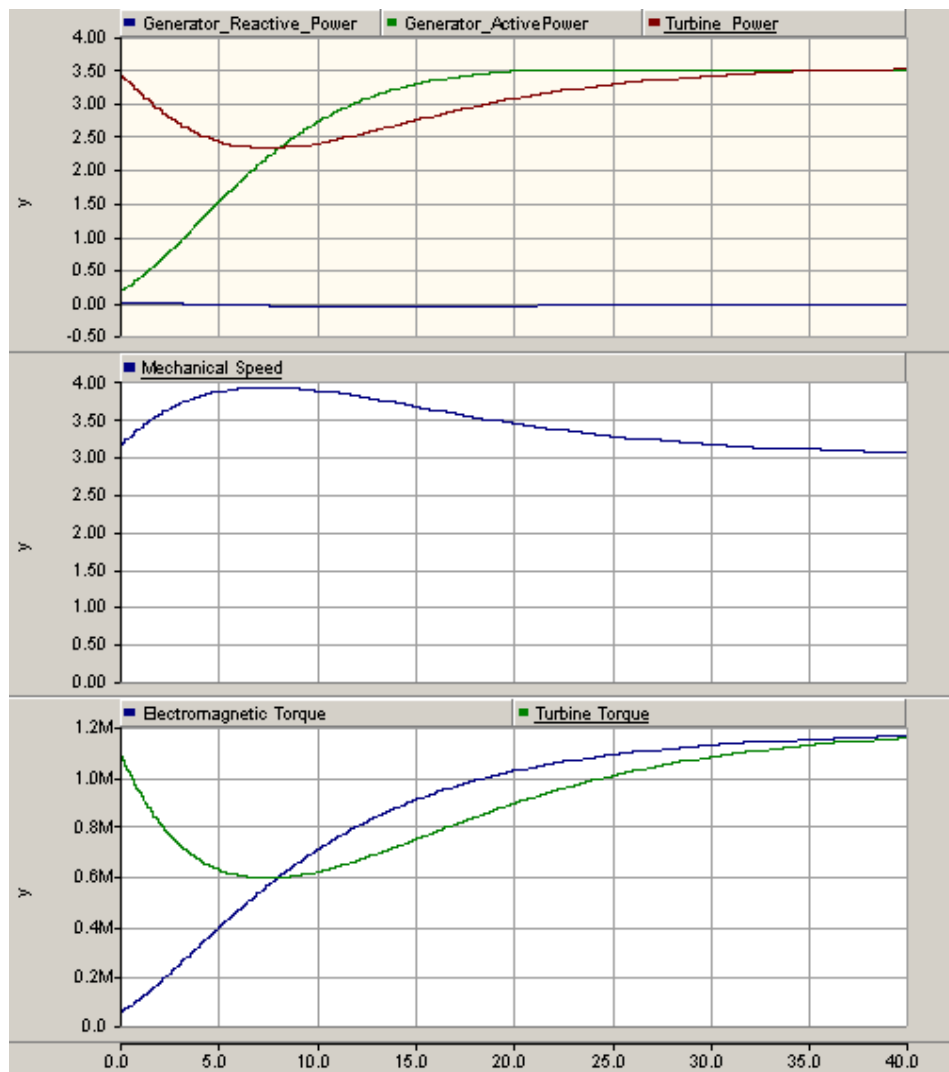


Figure 11: Curves obtained with "turb_gen_connection.psc"

6. AC/DC/AC : Power and Frequency conversion

The speed of the wind source being variable, a converter stage AC-DC-AC must be implemented in order to connect the output of the synchronous generator (variable frequency and voltage) to the grid, where a constant frequency and a constant voltage is needed.

In the following parts, the power conversion stage will be described and parameterized.

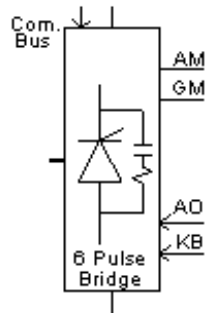
It is composed of a :

- **A diode rectifier**
- **A DC bus with a storage capacitance voltage**
- **A 6-pulse bridge thyristor inverter**

As the model represents only a single wind turbine, the firing angle of the thyristor are not controlled functions of the voltage level at the grid connection point but to keep the DC bus voltage to its rated level +/- 10%. This will involve the modelling of HVDC control systems as shown in the following parts.

6.1 Diode Rectifier

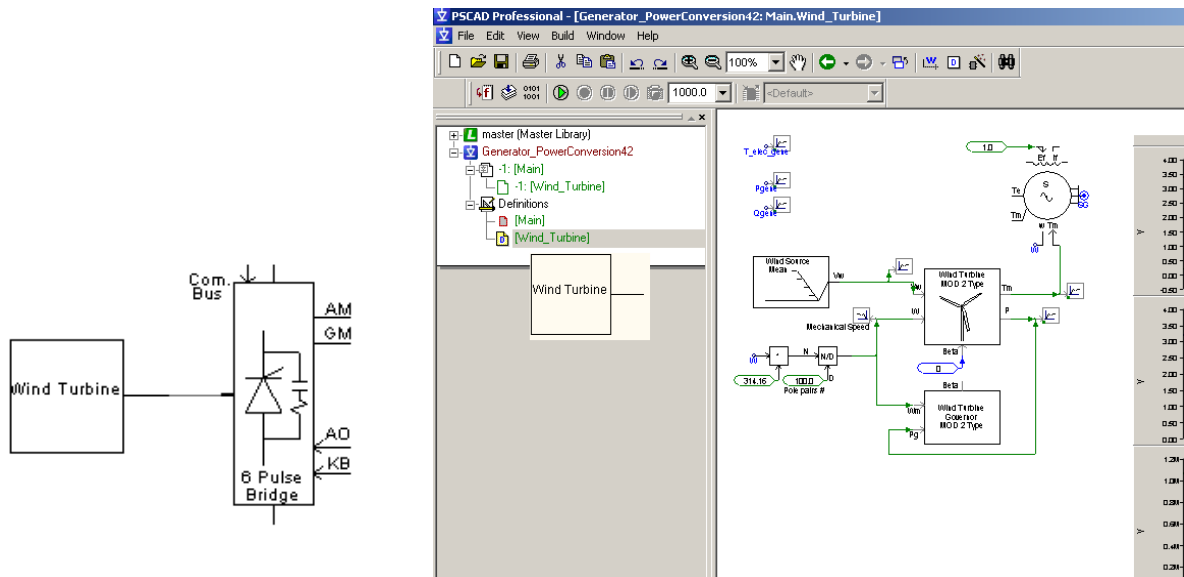
A 3 phase diode-rectifier can be modelled in PSCAD with the following component:



I / O	Definition	Description
ComBus	Input	The reference for the conduction start (V)
KB	Input	Block / deblock control signals (0,1)
A0	Input	Firing angle from the reference (rad or deg)
A,B,C	Input	The alternating voltage
AM	Output	Firing angle measurement (rad or deg)
GM	Output	Extinction angle measurement (rad or deg)
	Output	The direct voltage (KV)

Table 8: INPUT / OUTPUT rectifier – inverter

The **6pulse_bridge** component can be found in the folder “**Master Library/HVDC&FACTS**”.
Copy the generator and turbine in a subpage then connect it to the rectifier :



The 6-pulse bridge can be used as a thyristor bridge or a diode bridge but with a firing angle (AO) always set to 0.

Rectifier parameters:

The figure displays three screenshots of the [g6p200] 6 Pulse Bridge dialog box, showing different configuration tabs.

Configuration Tab:

- Thyristor Direction: ☒ Up, ☐ Down
- Use Snubber Circuit: ☒ Yes, ☐ No
- Graphics Display: ☐ 3 phase view, ☒ Single line view
- Firing Order Input: ☒ Angle in Radians, ☐ Array of 6 Pulses, ☐ 6 Pulses + 6 Interp. tin, ☐ Angle in Degrees
- Transformer Phase Config: ☐ +30 Deg, ☒ 0 Deg (Y-Dlead), ☐ -30 Deg (Y-Y or D-D), ☐ -60 Deg (Y-Dlag)

PLO Tab:

- Rated Frequency: 50.0 [Hz]
- PLO Proportional Gain: 10.0
- PLO Integral Gain: 100.0
- PLO Reference Voltage: ☐ Bus Voltage, ☒ Bus Voltage, Zero Sequence Removed, ☐ Star Source Voltage, ☐ Delta Source Voltage

Valve Data Tab:

- Thyristor ON Resistance: 0.01 [ohm]
- Thyristor OFF Resistance: 1.0E6 [ohm]
- Forward Voltage Drop: 0.0 [kV]
- Breakover Voltage: 1.0E5 [kV]
- Minimum Extinction Time: 0.0 [usec]
- Snubber Capacitance: 0.05 [uF]
- Snubber Resistance: 5000.0 [ohm]

Figure 12: Diode-Rectifier characteristics

6.2 Overvoltage protection

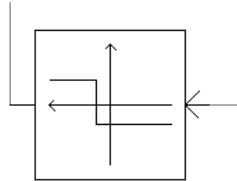
The rated value of the DC voltage is:

$$V_DCbus = (3 \cdot V_n \cdot \sqrt{6}) / \pi = (3 \cdot 690 \cdot \sqrt{6}) / \pi = \mathbf{1600 \text{ V}}$$

The output voltage of a generator is proportional to its speed. The speed of the generator not being controlled, the DC bus must be protected from over-voltage. With a secure margin of 10%:

$$\text{Maximum voltage} = 1.1 \cdot 1600 = \mathbf{1760 \text{ V}}$$

To secure the bus, it is possible to block the rectifier in case of over-voltage. This is done with the **Single Input Level Comparator**. This component can be found in the folder “**Master Library/CSMF**”.



Connect the Single Input Level Comparator to the KB input and define the maximum voltage:

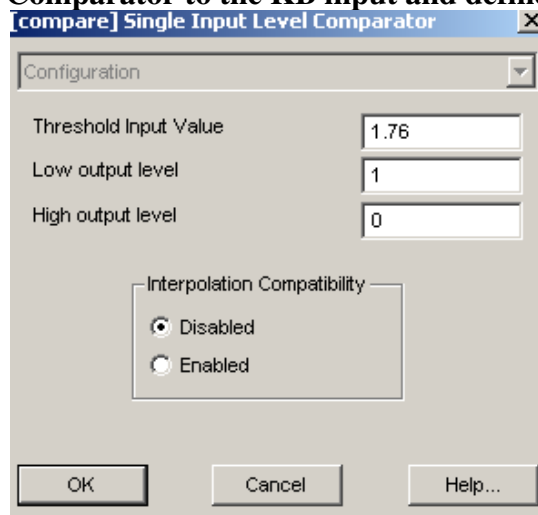


Figure 13: Single input level comparator characteristics

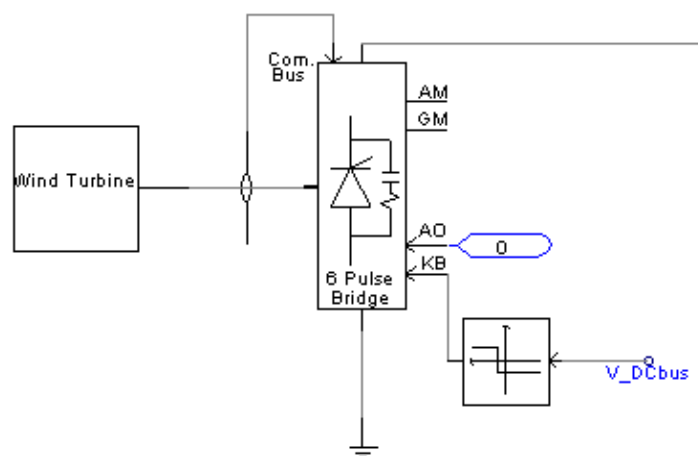


Figure 14: Rectifier and overvoltage protection

6.3 DC bus

6.3.1 Build the DC bus

1) Storage capacitance:

The energy stored in the DC bus must tolerate voltage sags of 1 second.

→ The energy stored must be $W = P_n \cdot 1s = 3MJ$.

$$E = \frac{1}{2} * C * V_{DCbus}^2$$

$$V_{DCbus} = 1600 \text{ V}$$

$$\rightarrow C = 2 * W / V_{DCbus}^2 = 2 * 3 * 1e6 / 1600^2 = \mathbf{2.3 \text{ f}}$$

2) Resistor:

The capacitor can be modelled as a short-circuit when it is discharged; thus we must include a resistor in order to limit the current peak to its rated value when the capacitor is at low charge.

$$V_{DCbus} = V_{res} + V_{cap} \approx V_{res} \text{ at low charge}$$

$$\rightarrow R = V_{DCbus} / I_n = 1600 / 1450 = \mathbf{1.1 \Omega}$$

3) Breaker:

The system is a first order one; its load time constant is $Tr = 3 * \tau$ ($\tau = RC$)

$$\rightarrow Tr = 3 * RC = 3 * 1.1 * 2.3 = \mathbf{7.5 \text{ s}}$$

This resistor must be shunted after **7.5s** in order to limit the Joule losses.

A **single_phase breaker** will be used to shunt the resistor (this component can be found in the folder “**Master Library/Breakers**”).



Configure the breaker as shown in the following figure:

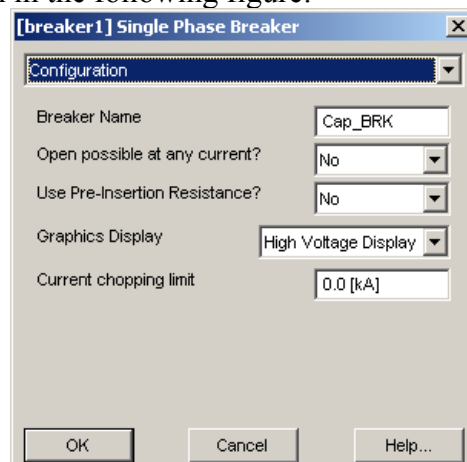


Figure 15: Breaker characteristics

In order to control the breaker, you can use the following sequencers

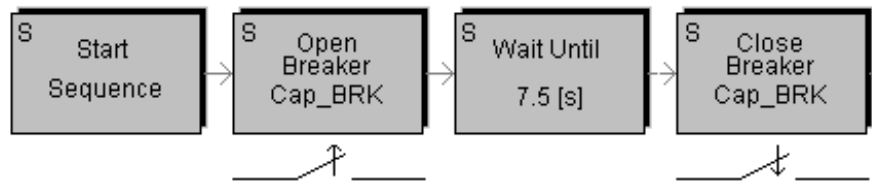


Figure 16: Breaker operation sequencers

You should obtain the following configuration:

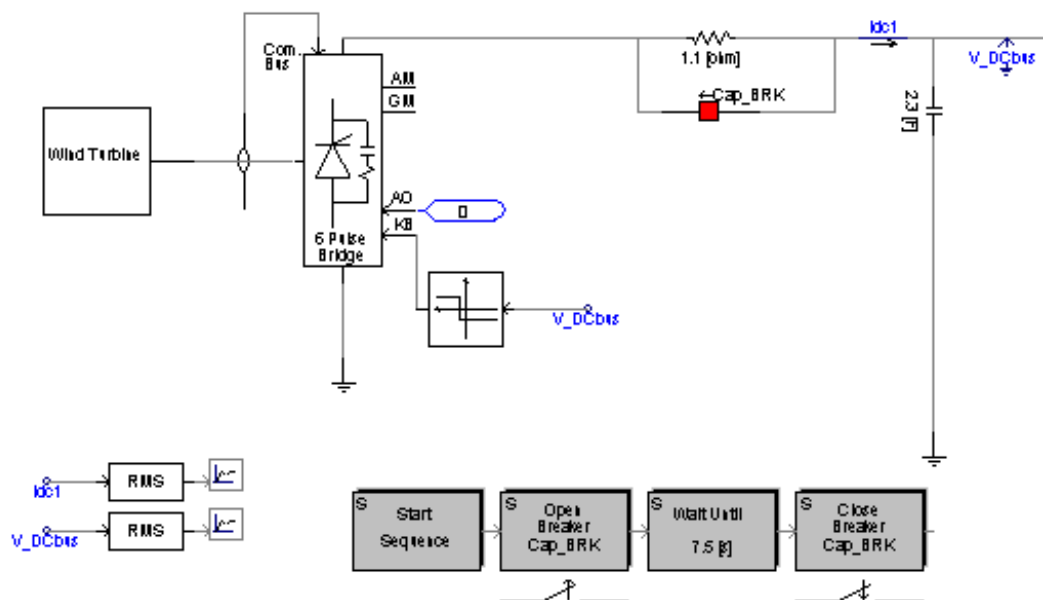


Figure 17: DC Bus

6.3.2 Model validation

To check that the system is correctly settled, prepare meters and scopes to visualize the following values:

Variable Name	Scale Factor	RMS Smoothing Constant
Pgene	3	X
Qgene	3	X
Pturb	3	X
Wmech	1	X
Tturb	955000	X
T elec gen	955000	X
V Dcbus	1	2
Idc1	1	2

Figure 18: Scale Factors and RMS constants for measured quantities

Simulation parameters:

- Duration: 60s
- Time step: 100 μ s
- Plot step: 1000 μ s

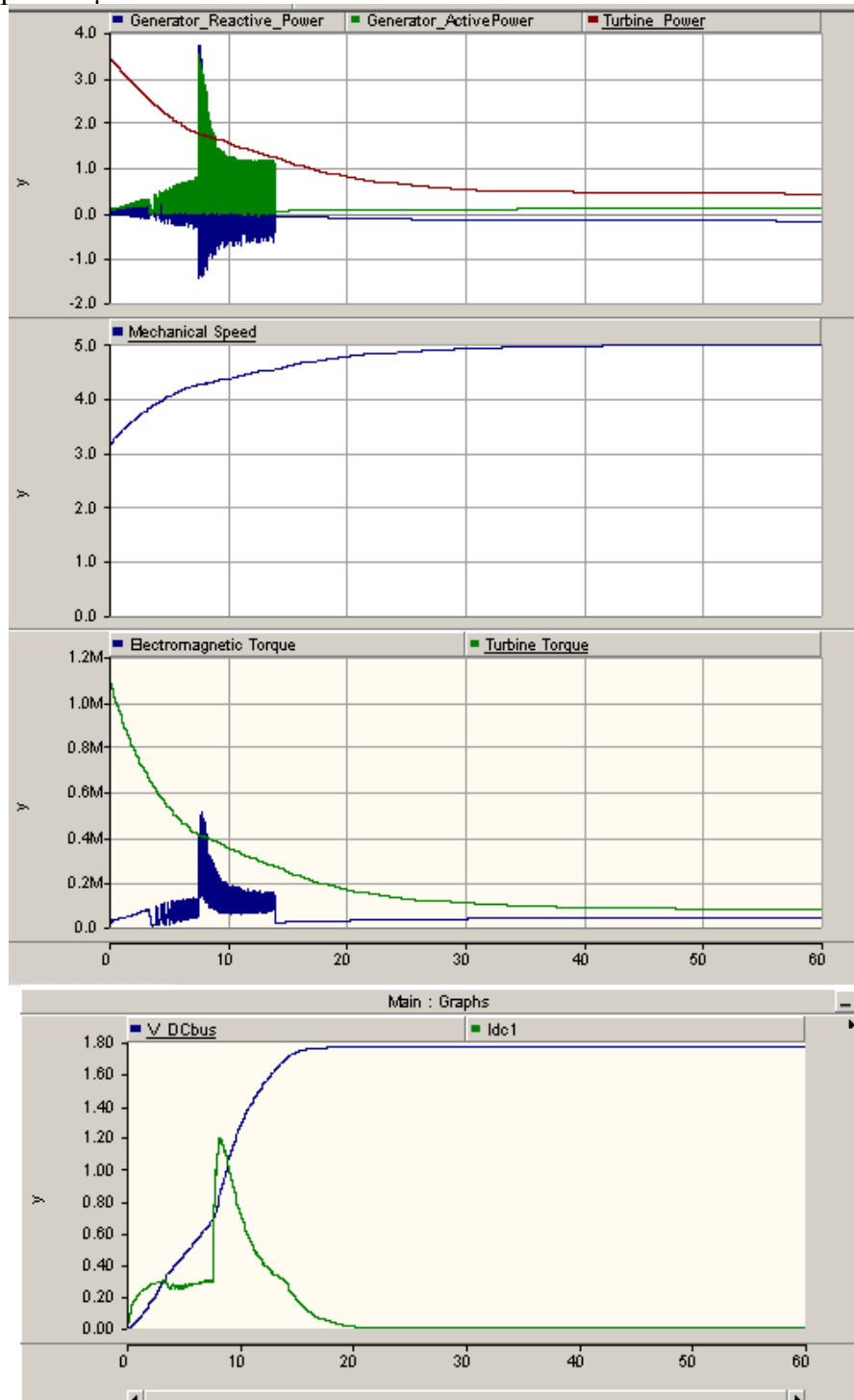


Figure 19: Curves obtained with “turb_gen_DC_Connection.psc”

The motor torque is always higher than the resistive torque so that the speed increases. As speed increases, C_p decreases so that the turbine power and the turbine torque decreases.

At $t=7.5$ s, the resistance is shunted, the capacitor is charged, the over-voltage regulation limits the bus voltage at 1760 V and I_{dc} goes to 0 so that the delivered output power of the generator becomes 0. When $T_{turb} = 0 = f \cdot w$; a new steady state is reached.

6.4 6-Pulse Thyristor inverter

6.4.1 Presentation

In this study, the modeled inverter is a current inverter with thyristors (monodirectional in current, bi-directional in voltage).

An inductor is added in order to model a current source at the input of the inverter.

- **Inductor:**

The energy in the DC bus must be enough to bear a voltage sag of 1 second $\rightarrow W = 3\,000\,000\text{ J}$.

The energy stored in a self-inductor is $W = \frac{1}{2} * L * I_{dc}^2$

Because $I_{dc} = P_{dc}/V_{dv} = 3*1e6/1600 = 1875\text{ A} \rightarrow L = 2*E / I_{dc}^2 = 2*3000000 / 1875^2 = 1.7\text{ H}$

Select an inductor and paste it your model.

- **Inverter:**

As for the rectifier, in order to obtain a thyristor current inverter, please select the 6 pulse bridge component. Characterize it as shown in the following figure:

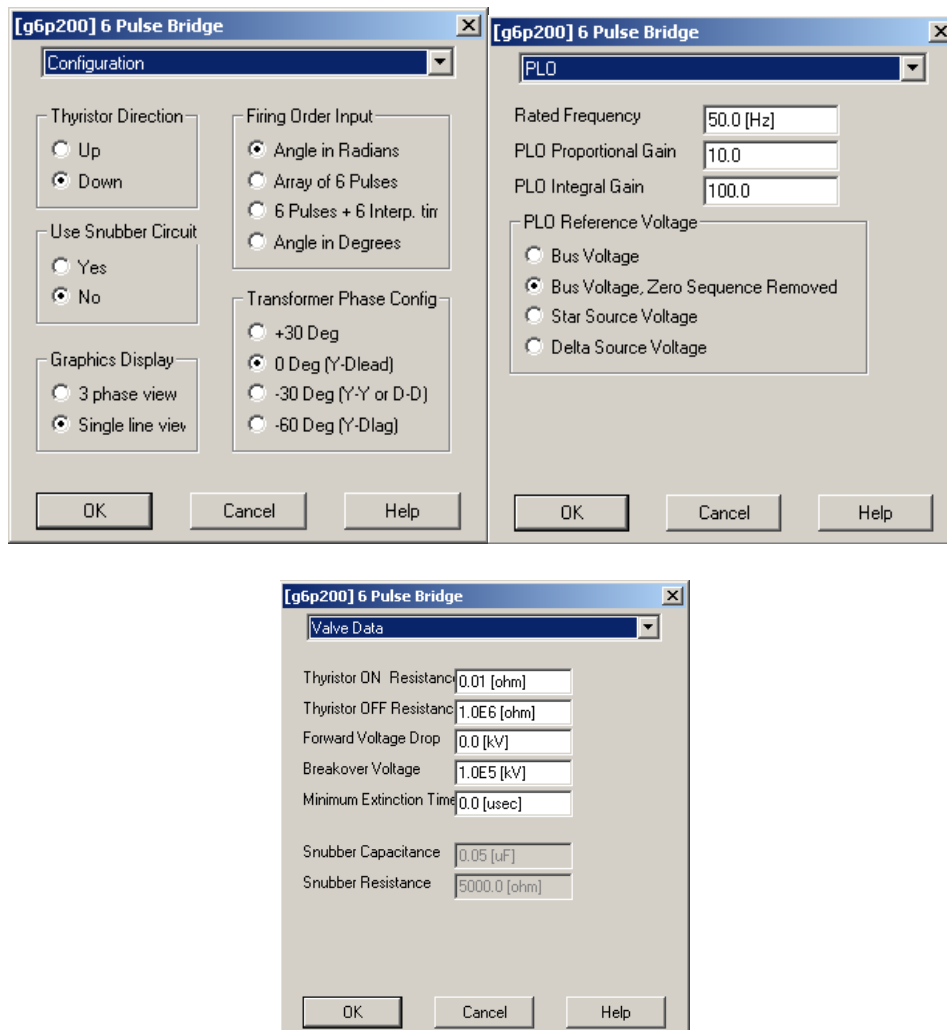
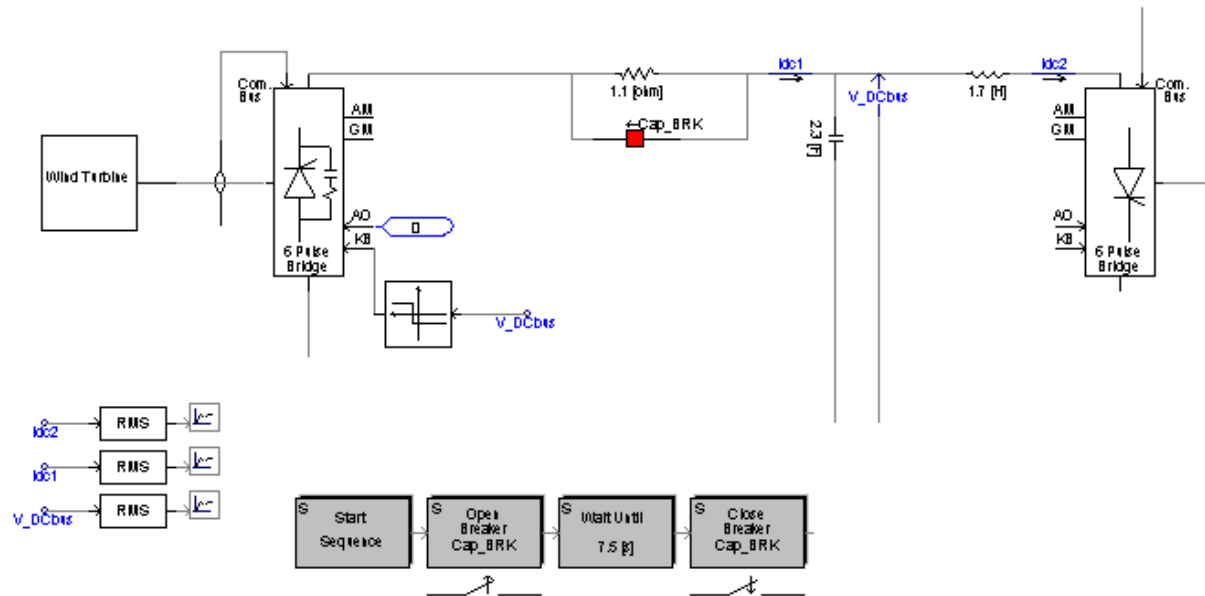


Figure 20: Thyristor Inverter characteristics



- **The inverter must provide two additional functions:**
 - DC bus voltage collapse limitation in case of fault on the distribution system
 - DC bus voltage control

6.4.2 Voltage collapse limitation

The bus must be protected from short-circuit in case of fault on the distribution network; otherwise, the voltage will collapse.

As for the overvoltage limitation, the secure margin is about 10%.

→ Low voltage limitation = $0.9 \times 1600 = 1440 \text{ V}$

To secure the bus, we will stop the rectifier in case of low-voltage. This is done with the Single input level comparator component, define it as shown in the following figure:

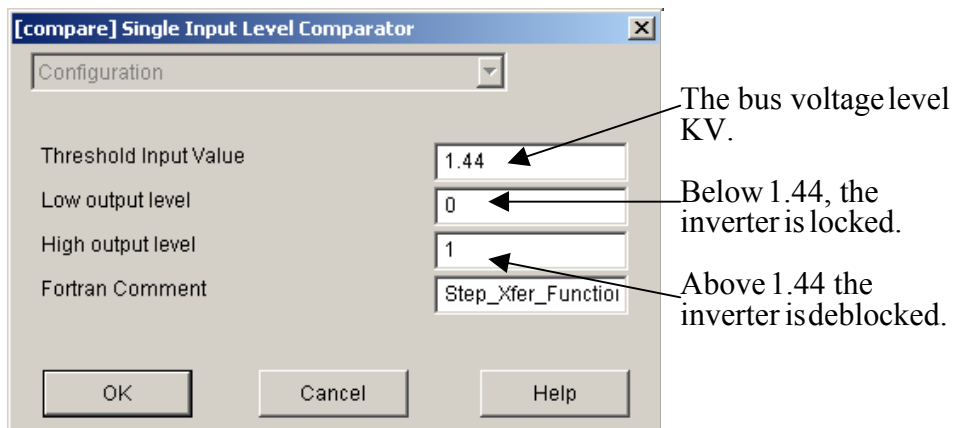


Figure 21: Single Input Level Comparator characteristics

You can connect the single input level comparator to the inverter in order to obtain the following scheme:

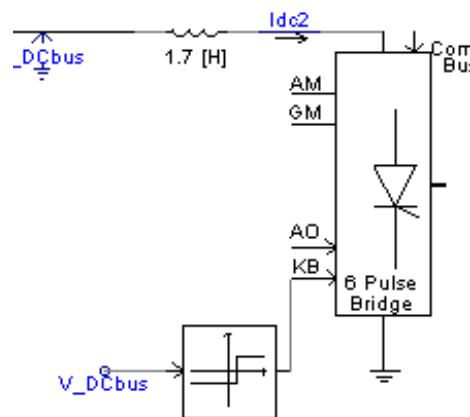


Figure 22: Inverter

6.4.3 Voltage regulation

At that point, one single wind turbine is modelled. The weak impact of the turbine to the network make that the voltage control will be done at the DC bus and not directly at the connection point.

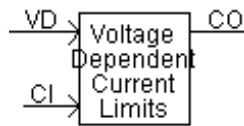
One define that the fluctuation of the DC bus voltage must remain between 0.95 p.u. and 1.05p.u.:

- $V_{dv}-5\% < V_{Dcbus} < V_{dv}+5\%$
- $1520 \text{ V} < V_{Dcbus} < 1680 \text{ V}$

This control will be performed with HVDC control system components available in the PSCAD Master library (under HVDC, FACTS & Power Electronics) :

- “Voltage Dependent current limits”
- “Generic current controller”,

- **Voltage Dependent Current Limits:**



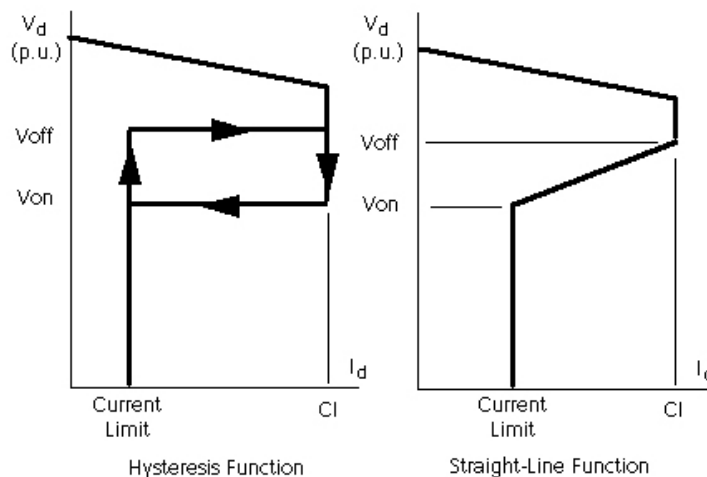
I / O	Definition	Description
VD	Input	Measured DC bus voltage (KV)
CI	Input	Reference Current
CO	Output	Current Order

Table 9: Voltage Dependent Current Limits component Inputs /Outputs

User defines two voltage values between which to maintain the DC voltage. These values are called “Applying Limit” (V_{on}) and “Removing Limit” (V_{off}). The user also enters a minimum value for the current, called “Current Limit”, and then:

- **if $VD > V_{off}$: Current Order $CO =$ Current Input CI**
- **if $VD < V_{on}$: Current Order $CO =$ Current Limit**

Then, 2 option exists to provide either a hysteresis type characteristic between the V_{on} and V_{off} or a straight line sloping characteristic between the two levels.



Please configure this component as shown in the following figures:

Note:
For the measured voltage, 1 p.u. = 1000V

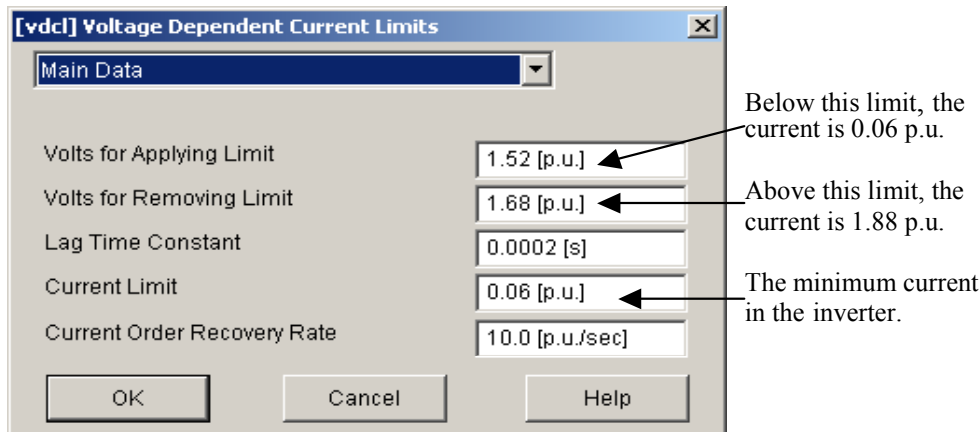
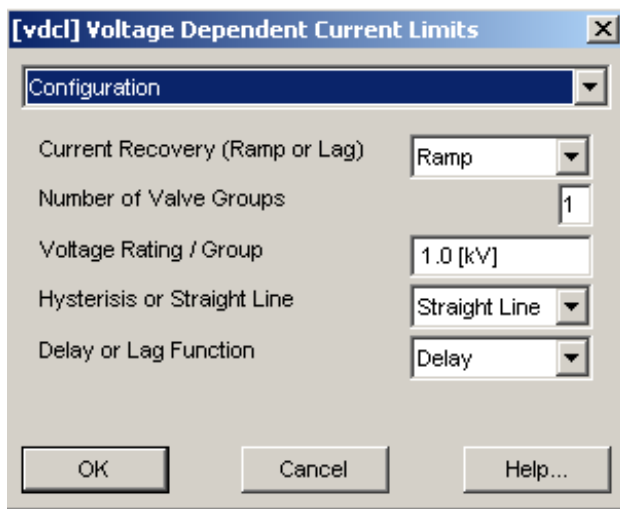
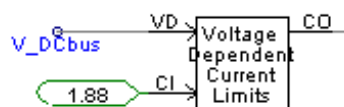


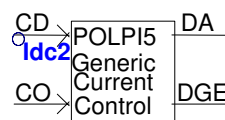
Figure 23: Voltage Dependent Current Limits characteristics

The Current Input is the current for the rated power:

$$I_{dc} = P_{dc}/V_{DCbus} = 3000000/1600 = 1880 \text{ A} = \mathbf{1.88 \text{ KA}}$$



- Generic Current controller:**



I / O	Definition	Description
CD	Input	Measured DC bus current (KA)
CO	Input	Current order from the “Voltage Dependent Current Limits” component
DA	Output	The firing angle for the thyristors of the inverter

Table 10: Generic current control Input /Output

The model allows to produce an alpha order from a proportional-integral controller, acting from the error between current order (CO) coming from “Voltage Dependent Current Limits” and measured current (CD) on the DC bus.

Configure this component as shown in the following figure:

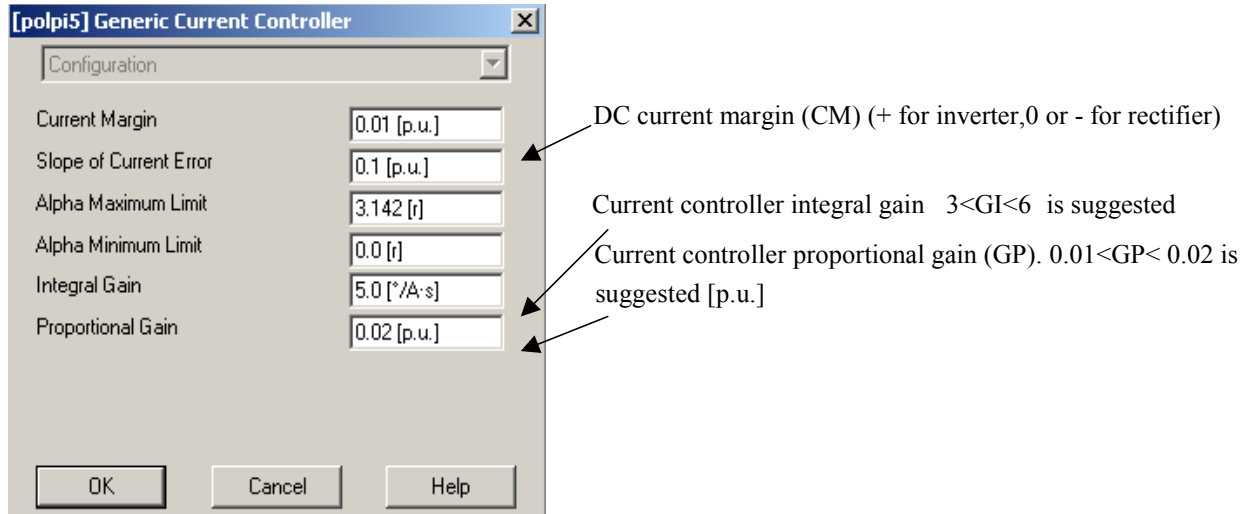


Figure 24: Generic Current Controller characteristics

The entire system should resemble the following figure:

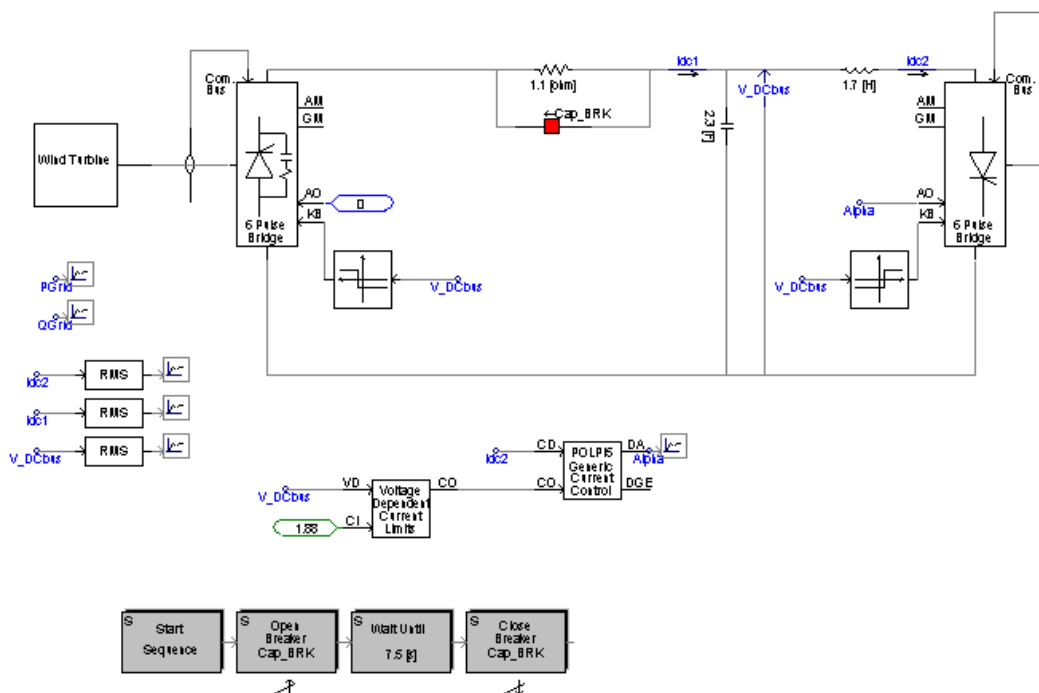


Figure 25: complete_model.psc



Note:

Pay attention to the fact that the common potential of the rectifier/inverter/Capacitor is no longer connected to the ground. If it is, this can lead to instability.

6.5 Connection to the network

Place the following elements in your system:

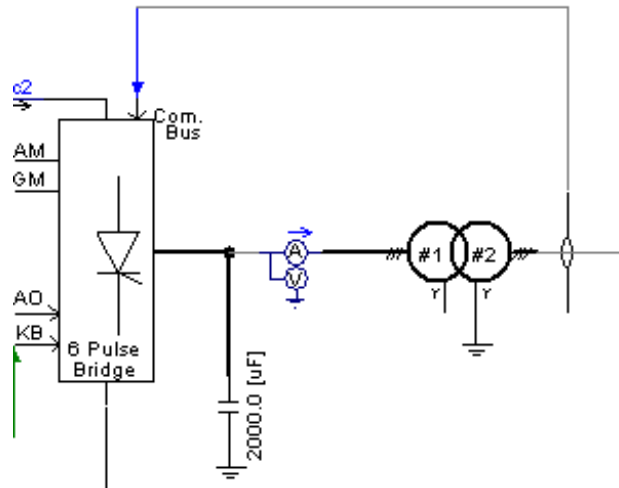


Figure 26: Connection between the distributed generator & the distribution network

- **Capacitors:**

Capacitors are added at the output to smooth output voltages and compensate for output reactive power.

The simulation allows us to dimension the capacitor:

With **C=2 mf** per capacitor, the reactive power injected to the grid is null.

- **Transformer:**

In order to connect the inverter output to the grid a transformer is necessary to adapt the voltage level.

Voltage level at the output of the inverter:

The current is $I_{eff-fond} = I_{dc} \cdot \sqrt{6} / \pi$

We consider that there are no losses in the inverter:

$$P = 3 \cdot V \cdot I_{eff-fond} \cos \varphi = V_{dv} \cdot I_{dc} \Leftrightarrow 3 \cdot V \cdot I_{dc} \cos \varphi \cdot \sqrt{6} / \pi = V_{dv} \cdot I_{dc} \Rightarrow V = \pi \cdot V_{dv} / (3 \cdot \sqrt{6} \cdot \cos \varphi)$$

The currents in the thyristor must be ahead of the voltage, so in order to have a secure margin, we choose $\varphi = \pi/4$:

V = 968 V and **U = 1675V**

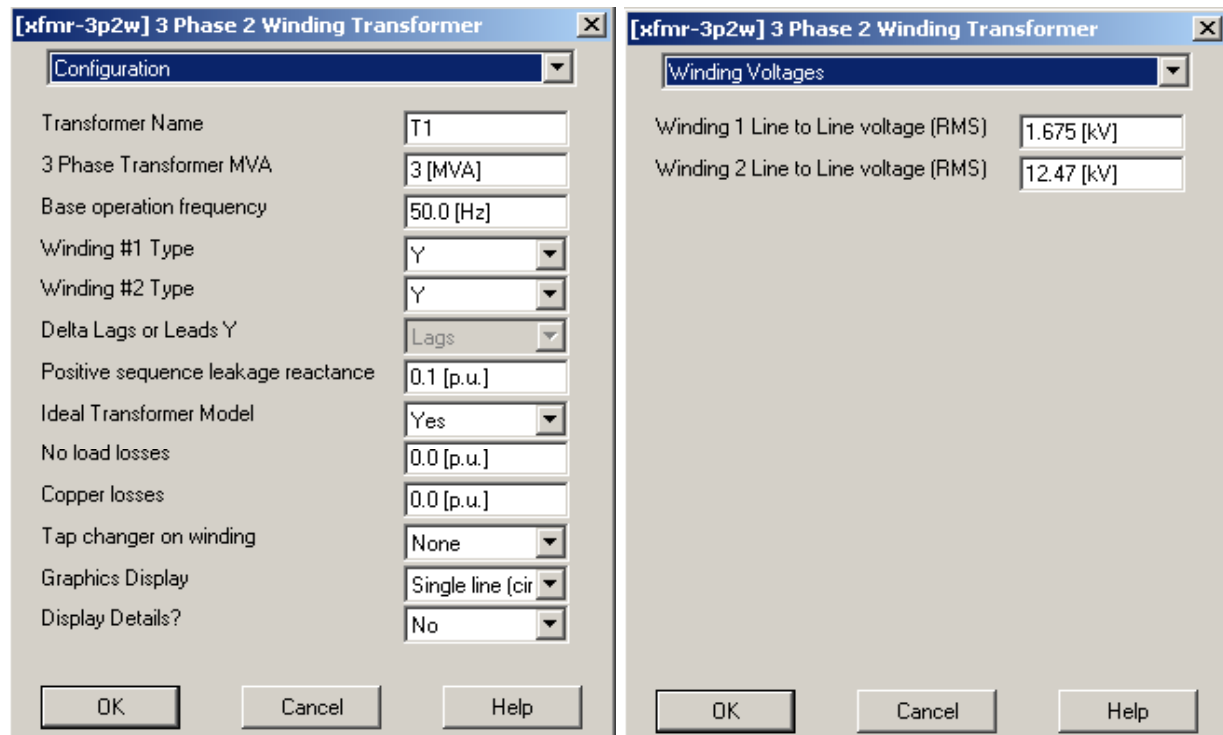


Figure 27: Grid Connection transformer characteristics

The complete model should look like the following diagram:

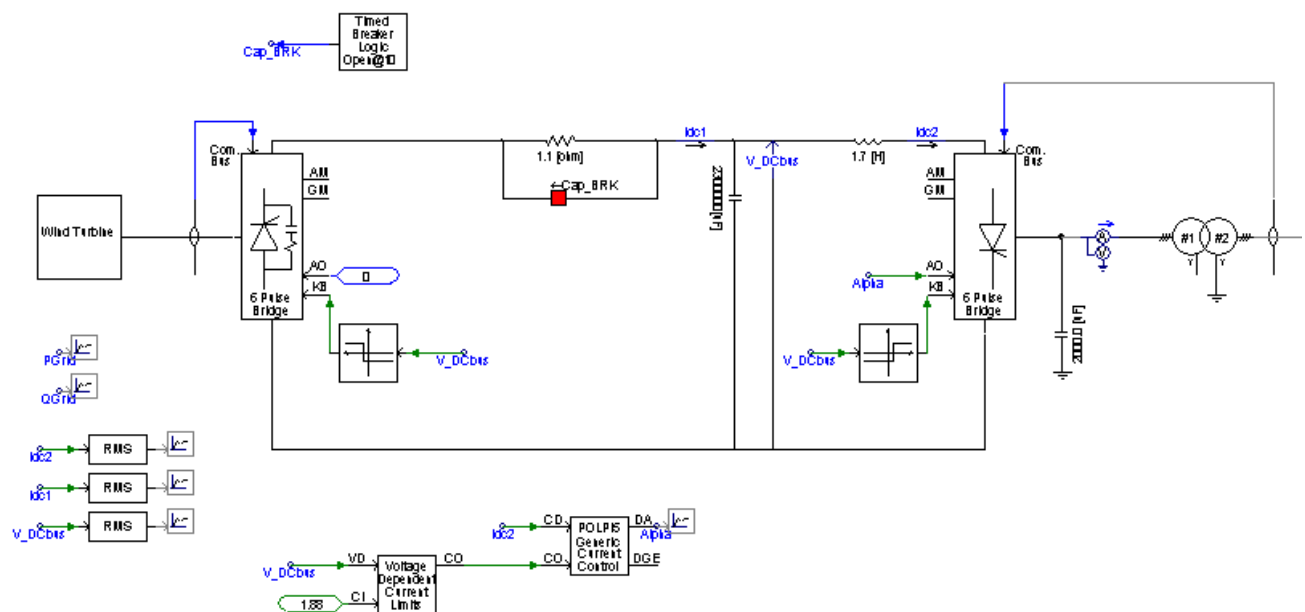


Figure 28: complete_model.psc

7. The distribution grid

A distribution grid is a radial grid managed as an open loop. The power always flows in the same direction.

Create a new problem: “**distribution_grid.psc**”.

7.1.1 Definition of the grid

The grid used in this study is shown below:

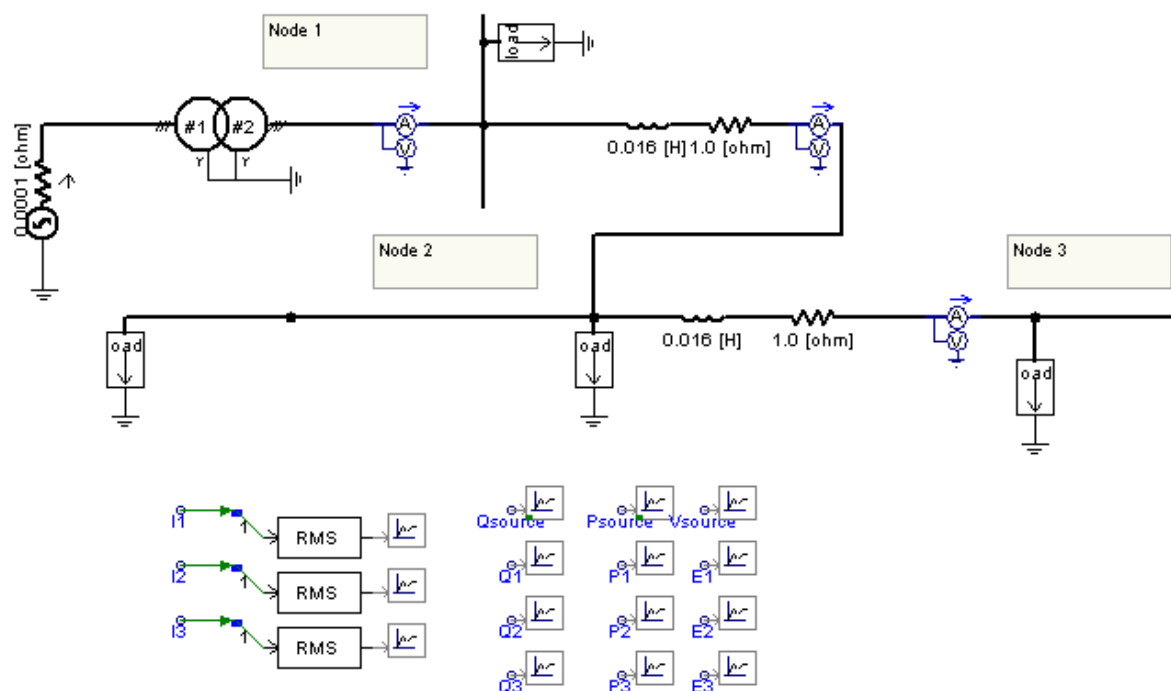


Figure 29: Distribution grid

- **Voltage Source:**

The generator is modelled with the following component, “3phase Voltage Source Model1”, available in the folder “**Master Library/Sources**”.



Configure the voltage source model as shown in the following figures and copy it to `distribution_grid.psc`:

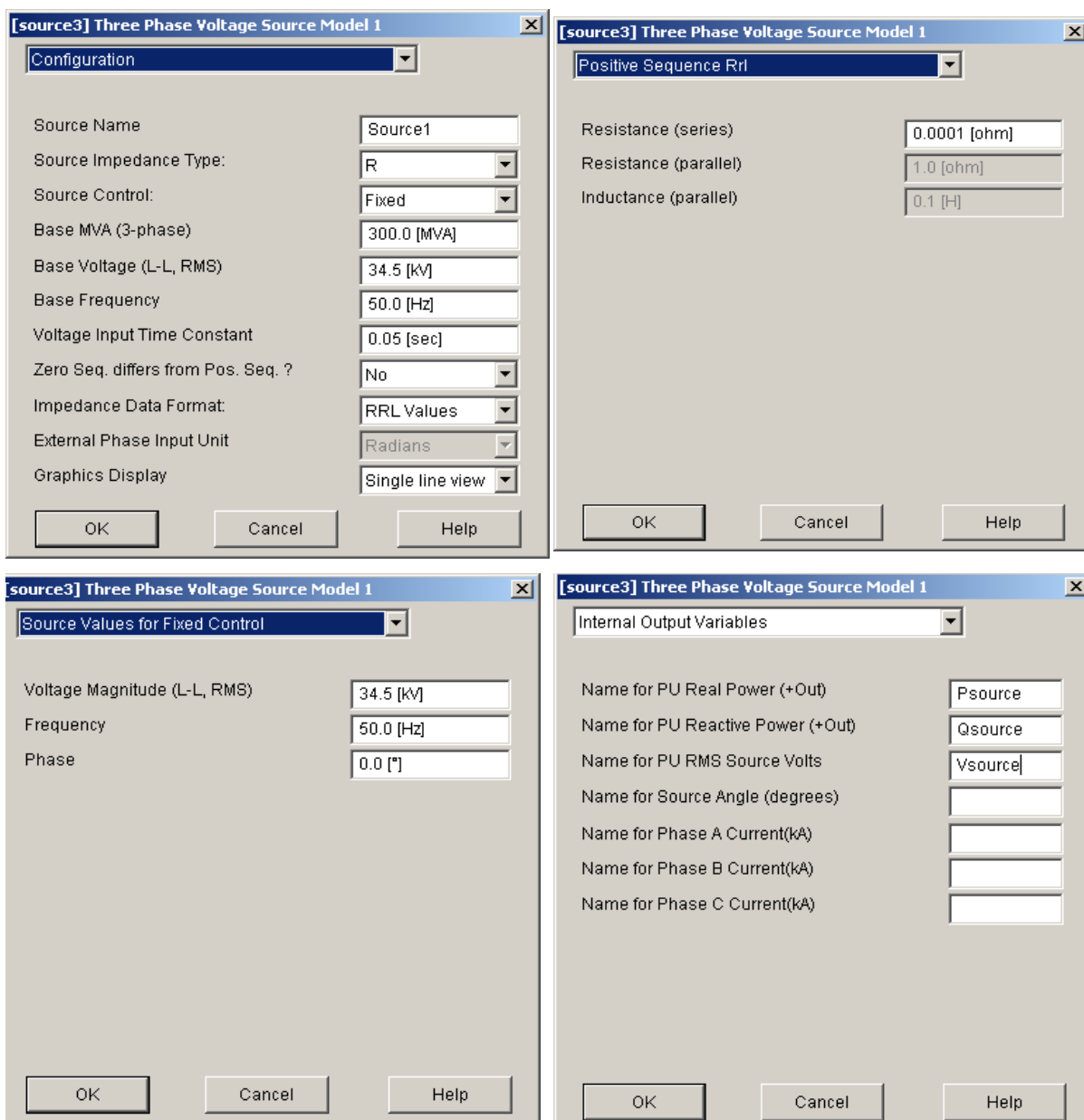
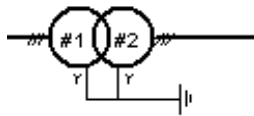


Figure 30: Voltage Source characteristics

- **Transformer:**

The 3 phase transformer is described by the following component :



[xfmr-3p2w] 3 Phase 2 Winding Transformer

Configuration

Transformer Name	T32
3 Phase Transformer MVA	300.0 [MVA]
Base operation frequency	50.0 [Hz]
Winding #1 Type	Y
Winding #2 Type	Y
Delta Lags or Leads Y	Lags
Positive sequence leakage reactance	0.06 [p.u.]
Ideal Transformer Model	Yes
No load losses	0.0 [p.u.]
Copper losses	0.0 [p.u.]
Tap changer on winding	None
Graphics Display	Single line (cir
Display Details?	No

OK Cancel Help

[xfmr-3p2w] 3 Phase 2 Winding Transformer

Winding Voltages

Winding 1 Line to Line voltage (RMS)	34.5 [kV]
Winding 2 Line to Line voltage (RMS)	12.47 [kV]

OK Cancel Help

[xfmr-3p2w] 3 Phase 2 Winding Transformer

Saturation

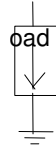
Saturation Enabled	No
Saturation Placed on Winding	#1
Air core reactance	0.0 [p.u.]
In rush decay time constant	1.0 [sec]
Knee voltage	1.25 [p.u.]
Time to release flux clipping	0.1 [sec]
Magnetizing current	1 [%]

OK Cancel Help

Figure 31: Grid Transformer characteristics

- **Node 1 Load:**

The node 1 load is described by the component **Fixed Load**, which can be found in the folder “**Master Library/Passive**”:



[fload] Fixed Load	
Parameters	
Rated Real Power per phase	2.133 [MW]
Rated Reactive Power(+inductive) per phase	1.6 [MVAR]
Rated Load Voltage (rms L-G)	7.2 [KV]
Volt Index for Power (dP/dV)	0
Volt Index for Q (dQ/dV)	0
Freq Index for Power (dP/dF)	0
Freq Index for Q (dQ/dF)	0
Fundamental Frequency	50 [Hz]
<input type="button" value="OK"/> <input type="button" value="Cancel"/> <input type="button" value="Help"/>	

Figure 32: Node 1 load characteristics

- **Node 2 and Node 3 Loads:**

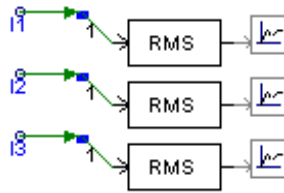
[fload] Fixed Load	
Parameters	
Rated Real Power per phase	0.266 [MW]
Rated Reactive Power(+inductive) per phase	0.2 [MVAR]
Rated Load Voltage (rms L-G)	7.2 [KV]
Volt Index for Power (dP/dV)	0
Volt Index for Q (dQ/dV)	0
Freq Index for Power (dP/dF)	0
Freq Index for Q (dQ/dF)	0
Fundamental Frequency	50 [Hz]
<input type="button" value="OK"/> <input type="button" value="Cancel"/> <input type="button" value="Help"/>	

Figure 33: Node 2, 3 load characteristics

7.1.2 Load Flow Simulation

• Metering and Graphs:

- At the 3 nodes, extract the single phase RMS current to the three phase measured current.



Variable Name	Scale Factor	Rated Voltage for Per Unitizing	RMS Smoothing Time constant
Psource, Qsource	300	X	X
E1,E2,E3	1	12.47	0.02
Iabc1, Ibc2, Iabc3	1	X	0.2

Table 11: Characteristics of meters for displayed values

• Simulation parameters:

- Duration: 2s
- Time step: 100 μ S
- Plot step: 1000 μ S

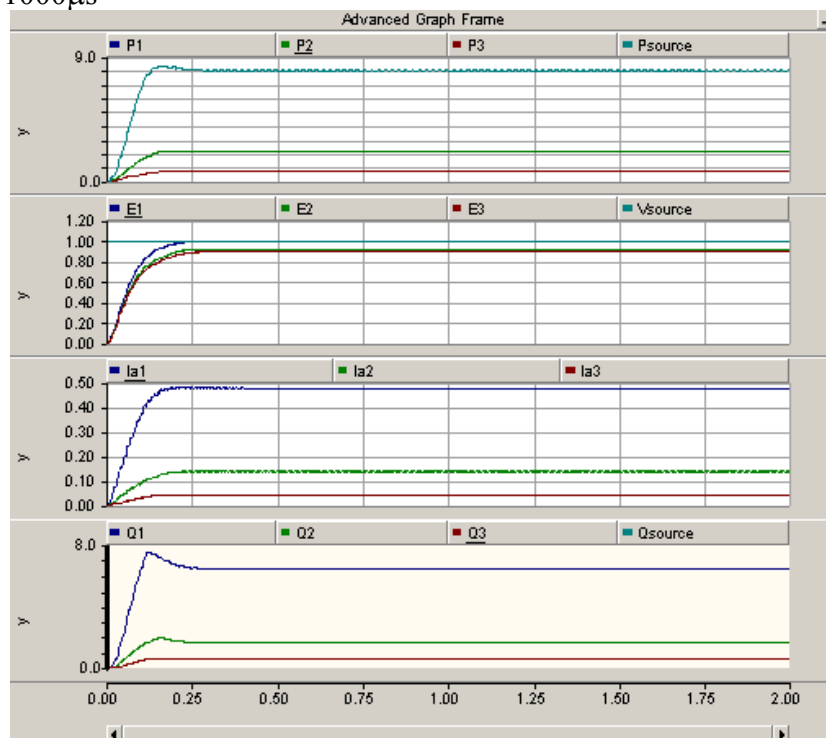


Figure 34: Load flow grid simulation

At $t=2s$, we have the following values:

	Node1	Node2	Node3
P (MW)	7.3	1.44	0.71
Q (MVAR)	5.73	1.13	0.55
V (pu)	1	0.95	0.92
I (kA)	0.43	0.09	0.05

Table 12: Results

We can see light voltage drops due to losses in the grid: $\Delta \text{ Voltage} = R \cdot I \cdot \cos \phi + L \omega \cdot I \cdot \sin \phi$

PART C: SIMULATE

8. Constant Wind Study

8.1 Structure the complete model

We will now add the distribution grid to the wind generator.

First, create the sub-page for the grid. Follow the steps described in part B. This subpage will have one electrical connection to the main page **located at the Node 2 of the grid**. This node will be a dimension 3 electrical node. Then, you will obtain :

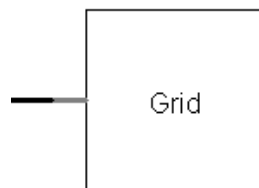
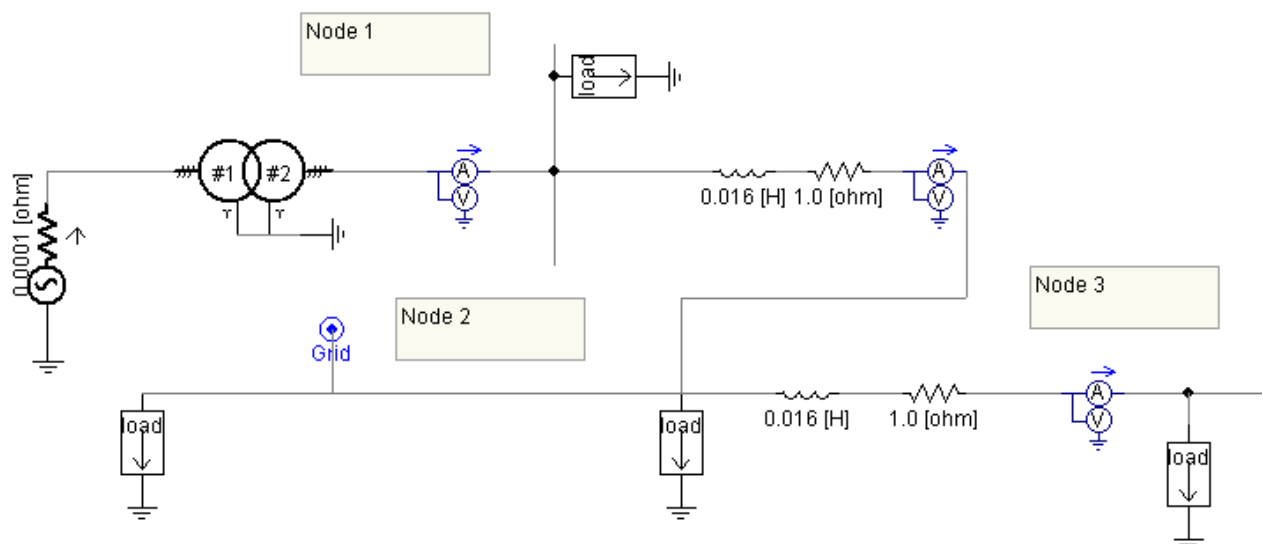


Figure 35: “Grid” sub-page interface

Then, paste into this sub-page all the elements contained in “**distribution_grid.psc**”. **Do not forget to add the external electrical node at the node 2 of the distribution grid.**





8.2 Constant wind study

The first study is done with a constant wind speed.

Then add meters and channels in order to visualize the following values: Alpha, Idc, Idc2, Pgrid, Qgrid, V_DCbus.

- **Simulation parameters:**

- Duration: 40 s
- Time step: 100μs
- Plot step: 1000μs
- Startup Method: Standard

The results are the following :

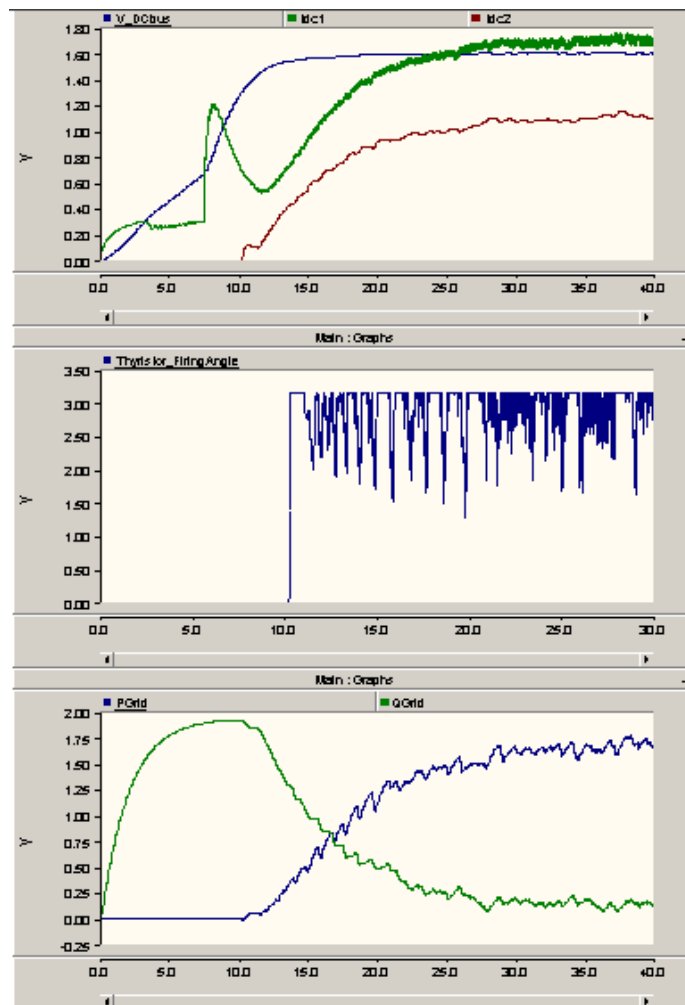


Figure 37: constant_wind_study results

- **Analysis:**

The generator voltage increases according to the speed.

When V_{dv} reaches 1440 V, the DC bus regulation is activated and the alpha drive maintains the voltage between 1520V and 1680 V. Once V_{dv} reaches 1520V, the inverter is unlocked, and Idc2 flows from the DC-bus to the grid. The alpha angle varies according to the measured voltage.

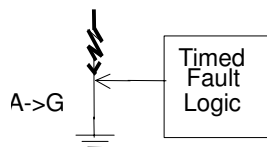
We measure 1.6MW for the output active power and no reactive power owing to the capacitors

9. Fault Analysis

The connection of a distributed generator to a radial distribution system leads to situations not normally supported by the network in case of faults.

The distribution network is a radial network and the protections are based on the current measurement. The distribution system is the same as before.

The faults are simulated with the two following components which can be found in the folder “**Master Library/Faults:**



This simulation consists of connecting the distributed generator at one node and the fault component at another node. Then, the current and the active power are measured in order to determine the protection level necessary and compared to the values measured without the wind turbine generator.

9.1 Default at Node 3

9.1.1 Without DG

First perform a simulation with the distribution grid alone.

Add the **3phase fault** defined below and connect it at node 3 of the network:

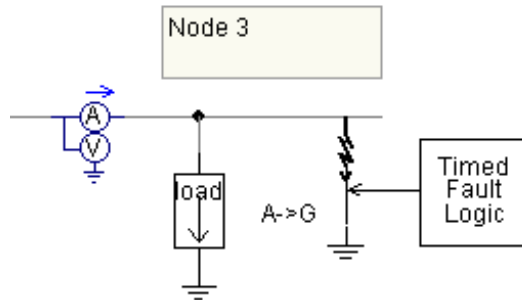


Figure 38: 3Phase fault on the grid

Configure the fault as shown below:

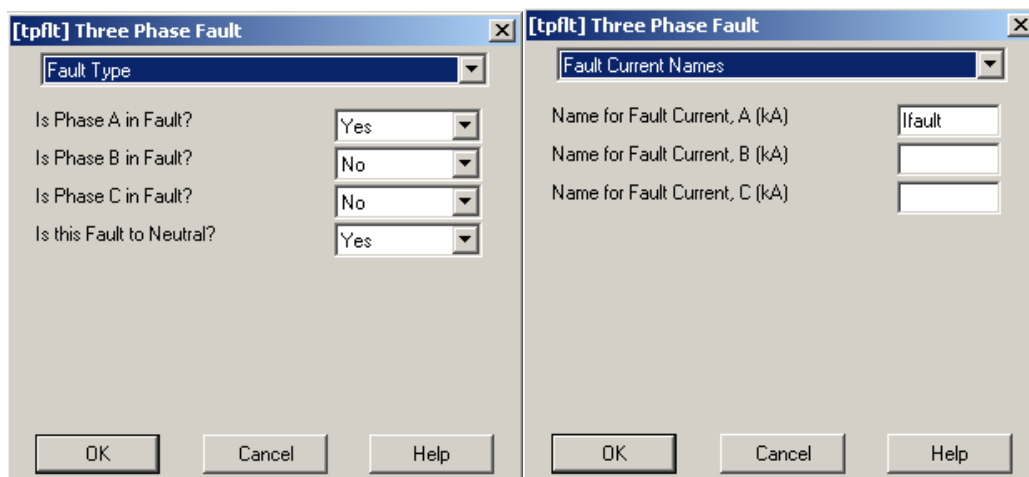


Figure 39: Three phase Fault component characteristics

- Configuration for the Time fault logic component:

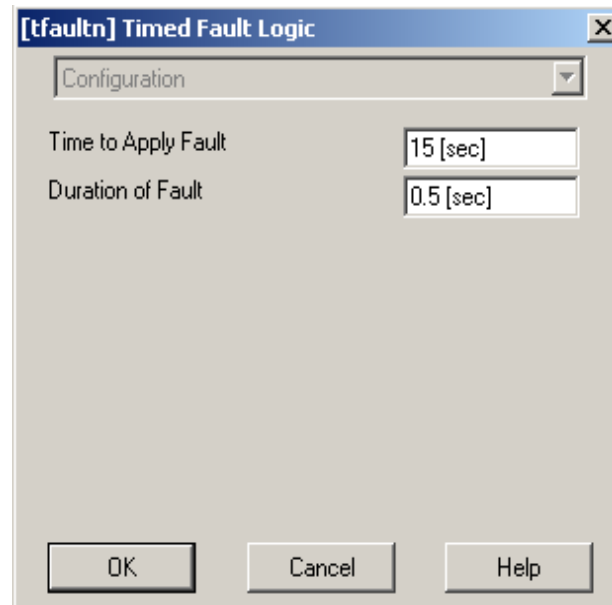


Figure 40: Time fault logic configuration

- **Simulation parameters:**

- Duration: 20 s
- Time step: 50 μ s
- Plot step: 1000 μ s

9.1.2 With DG connected at node 1

From the constant wind case, add a fault on the Node 3 of the grid.
Set the Wind generator connection to the **node 1** of the grid

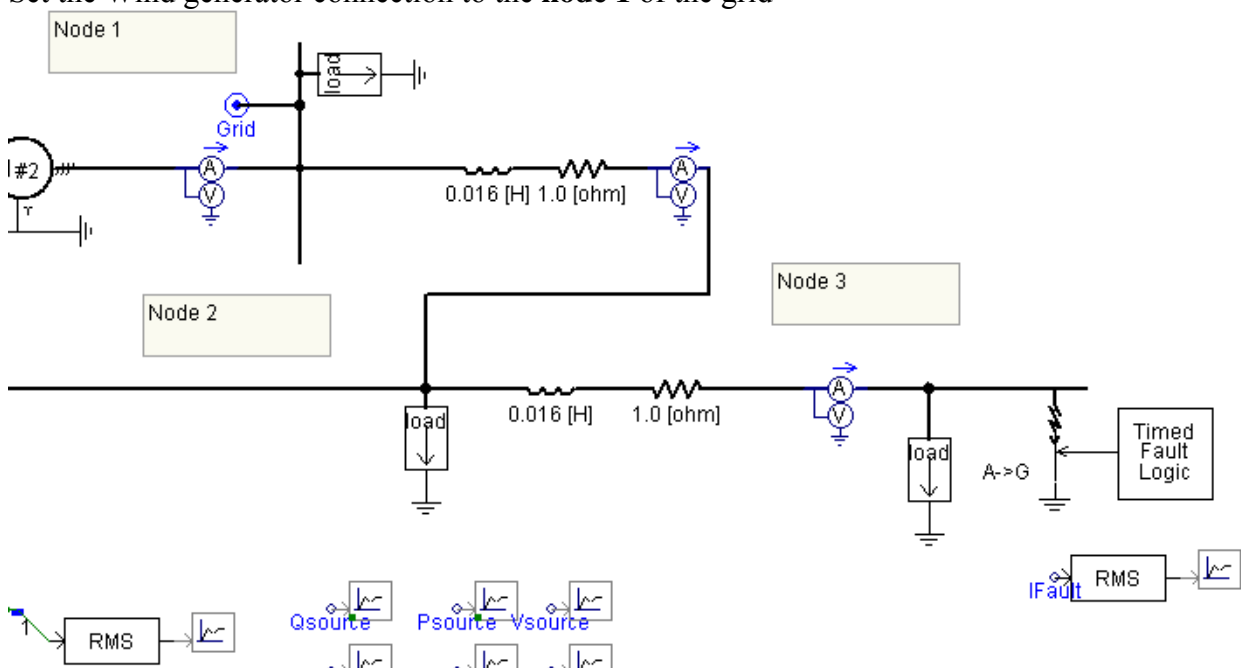
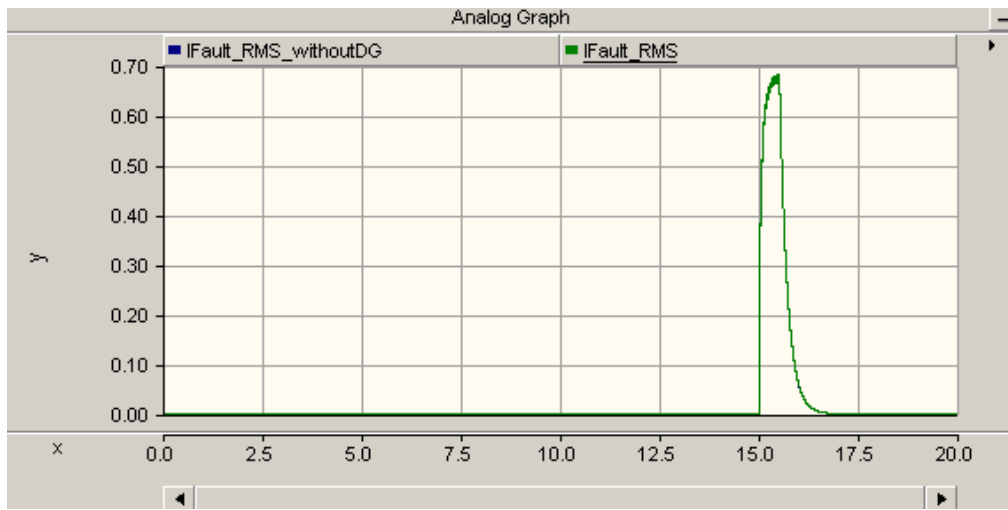
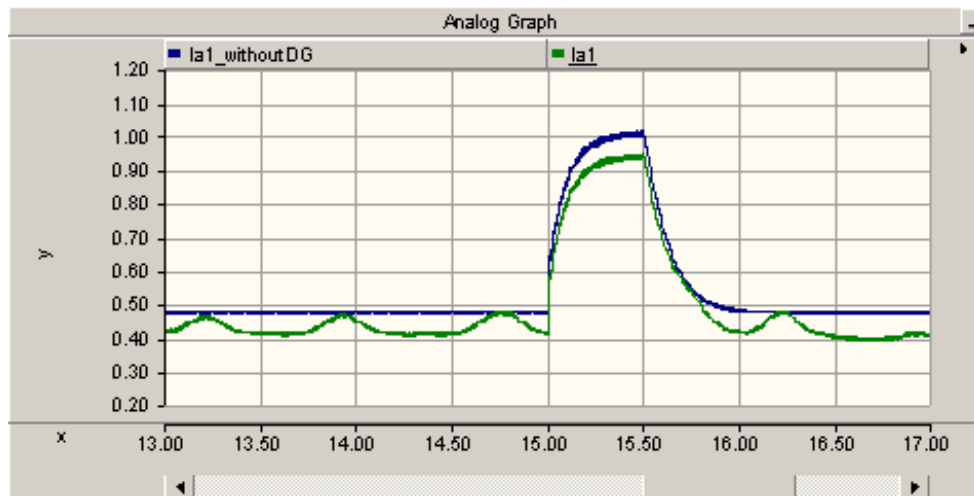


Figure 41: Timed Fault logic characteristics

Modify the connection between the grid and the distributed generator; in this simulation, the external node will be **Node 1**.

• Curves & Analysis



Default node3	Peak Values without DG	Peak Values with DG node1
I _l (KA)	1.02	0.94
I _{fault} (KA)	0.68	0.68

Table 13: Results from fault_analysis1b.psc

The peak values at Node 1 is lower with DG than without DG.

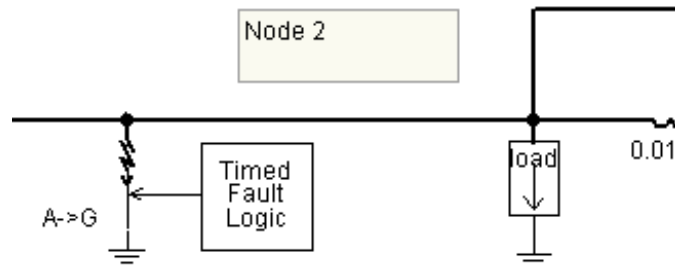
Thus:

- 1) The detection level must be below the smallest value (but above the normal consumption value).
- 2) The current at normal condition without DG must not reach the detection level, or the grid manager must know when the DG is on-line or off-line to modify the protection level.

9.2 Default at Node 2

9.2.1 Without DG

We will now insert a the same type of fault (phase A to ground) at node 2:



Then, run the same simulation as before.

9.2.2 With DG connected at node 3

Perform the same simulations with the grid connected at node 3 :

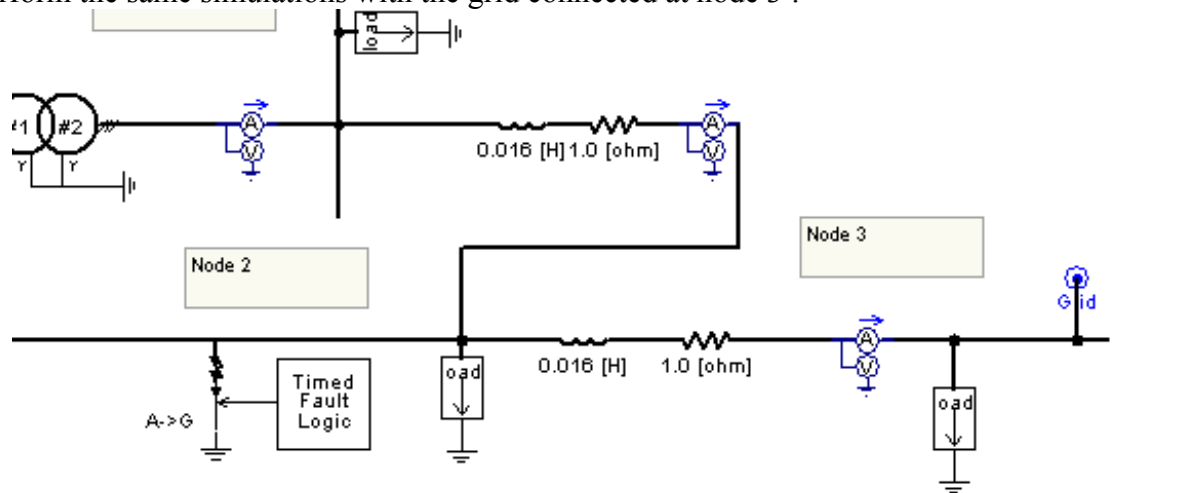


Figure 42: Grid connection at node 3

- **Curves & Analysis:**

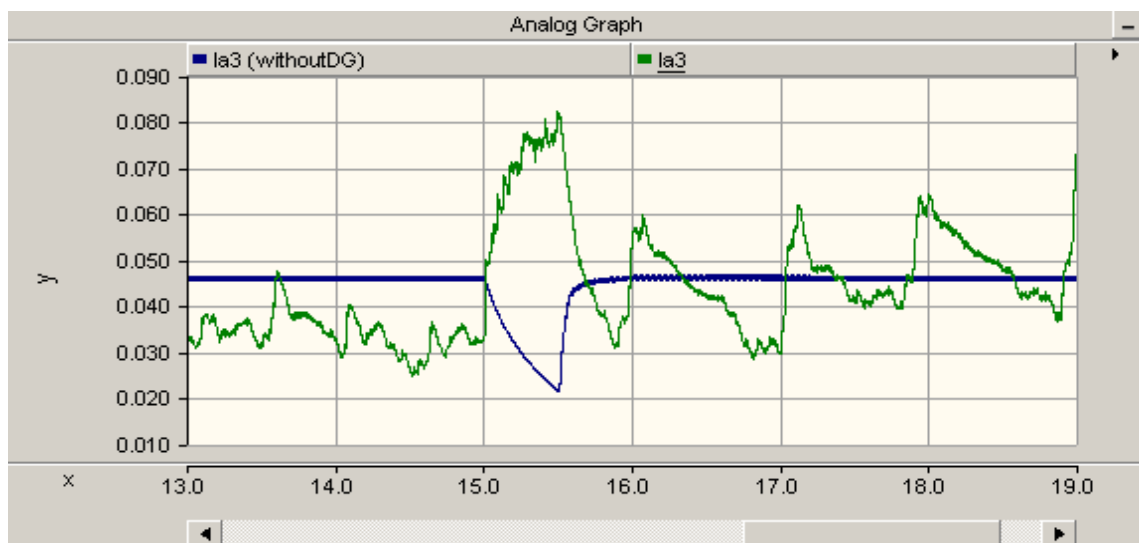


Figure 43: Current in phase A at node3

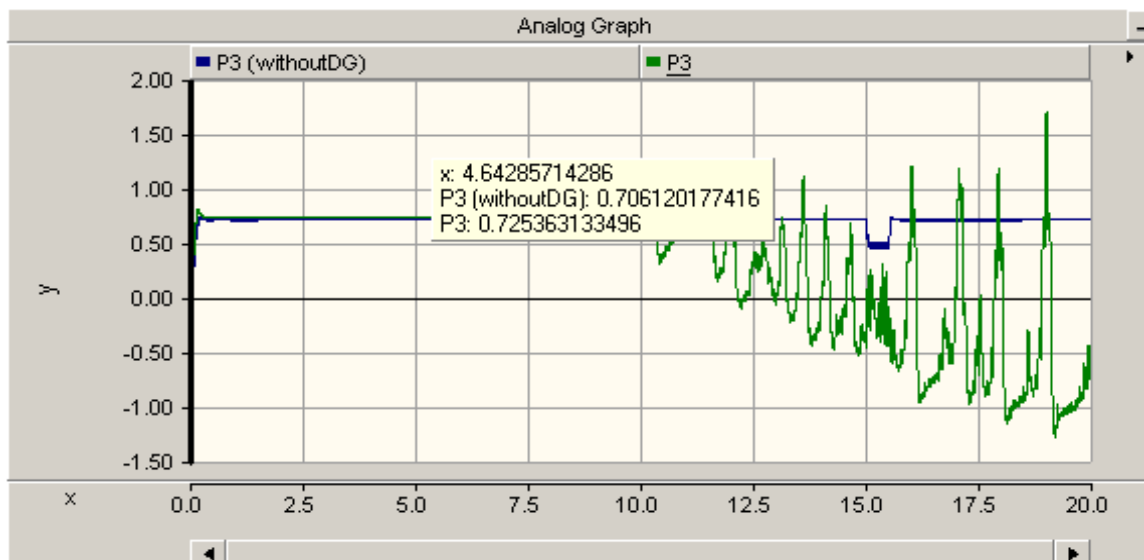


Figure 44: Active Power at node 3

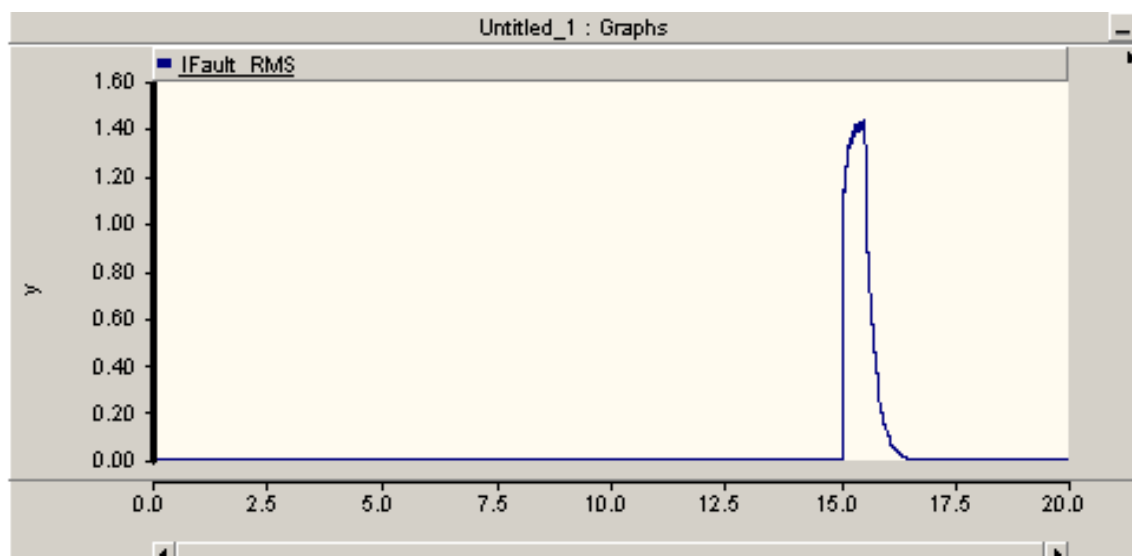


Figure 45: Fault current

Default node2 – DG node3	Peak Values without DG	Peak Values with DG node3
I3 (KA)	0.02	-0.08
Ifault (KA)	1.43	1.43

Table 14: Simulation results from fault_analysis 2b.psc

During a fault, the current at I3 flows in the other direction with DG (the active power is negative). If there is a power protection at this point, this protection will see a negative active power and thus, it will never act! The distributed generator fault current will never be stopped. The peak value at I3 is greater with DG. This could cause a serious problem if the new and larger I3 exceeds the circuit breaker maximum interrupting rating. In this case the circuit breaker must be changed.

9.3 Conclusion

The connection of a wind turbine cannot be done directly. The distribution grid is a radial grid and the connection of a distributed generator can modify many uses and controls. Therefore, a complete study must be done because the implementation of a distributed generator will change the protections and circuit breakers needed.

10. Variable wind study

In this study, two regulations are analysed:

- Dynamic pitch control
- Passive pitch control

10.1 Dynamic pitch control

In this case, β is regulated with the wind turbine governor.

In this configuration, the simulation scheme would be:

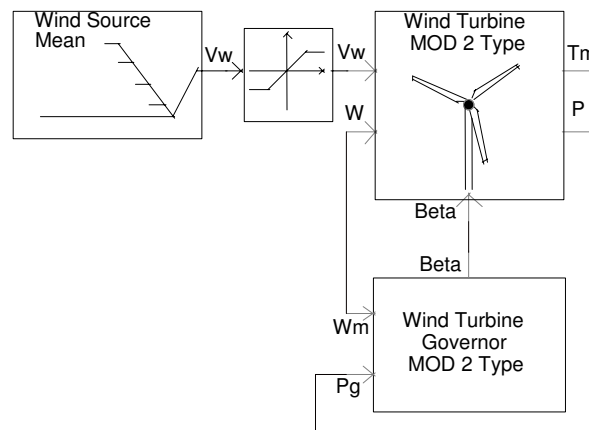


Figure 46: PSCAD model in dynamic pitch control configuration

In this case, the hard-limiter models the cut-in and cut-off values for the wind speed.

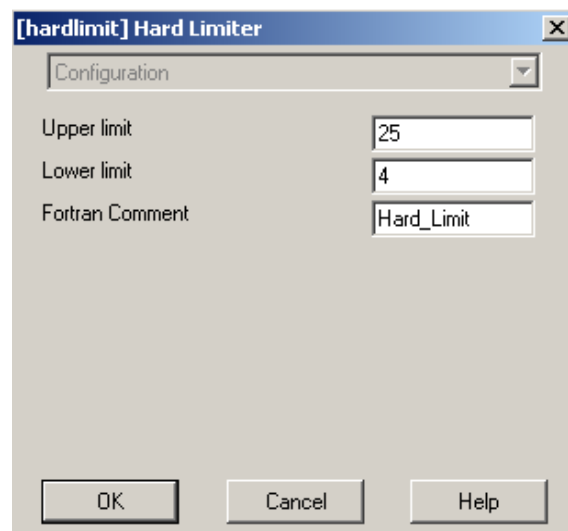


Figure 47: Hard limiter in Dynamic pitch control configuration

We will generate the following wind waveform thanks to the CSMF components:

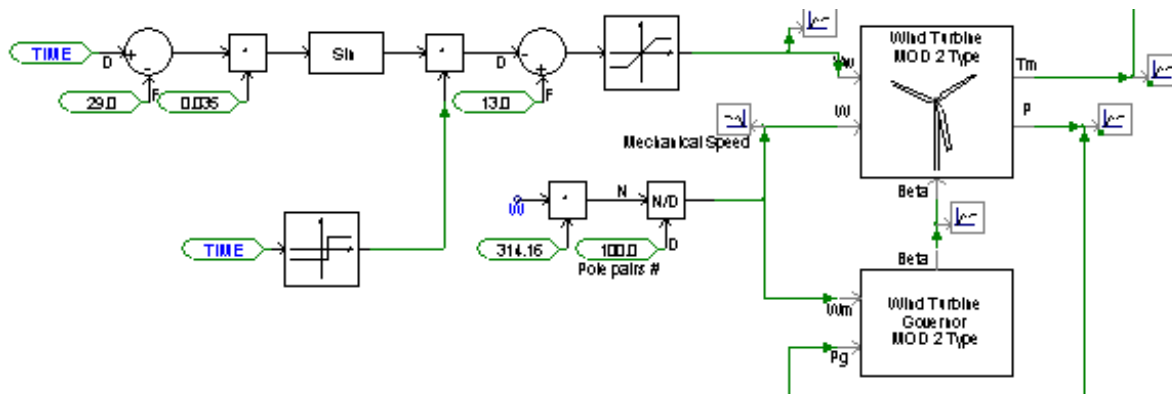
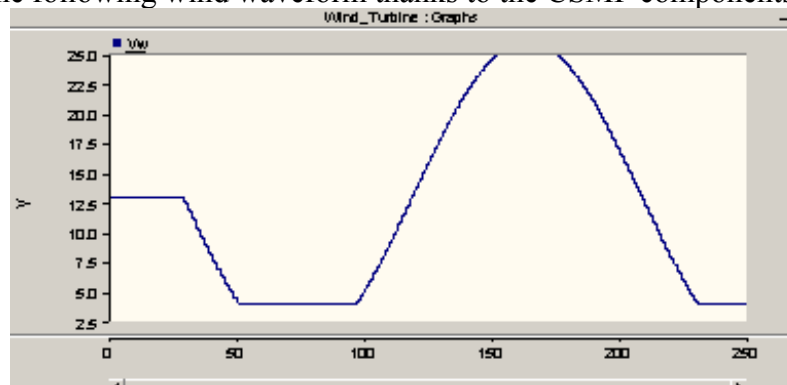


Figure 48: Wind source in variable wind speed study

At the beginning, the wind speed is constant at 13m/s to reach the steady state. After $t=29s$, the wind speed becomes variable thanks to the “Single input level comparator” component with the following parameters :

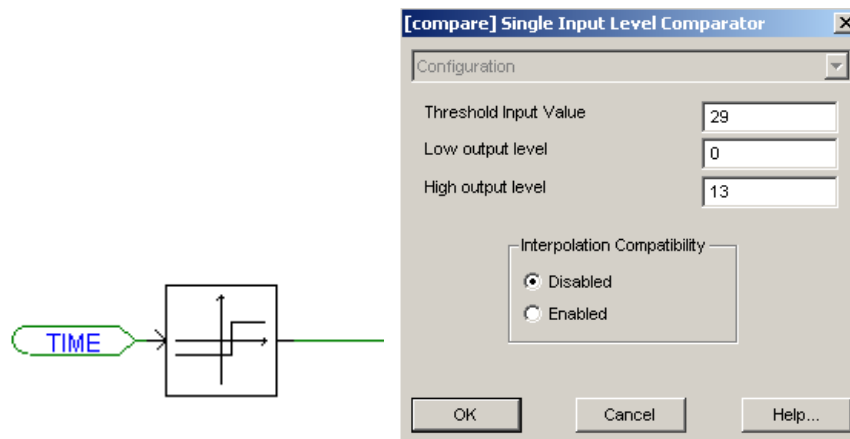


Figure 49: Single input level comparator settings

Add two breaker operations with sequencers in order to limit the peak current when the wind will reach 13m/s for the second time:

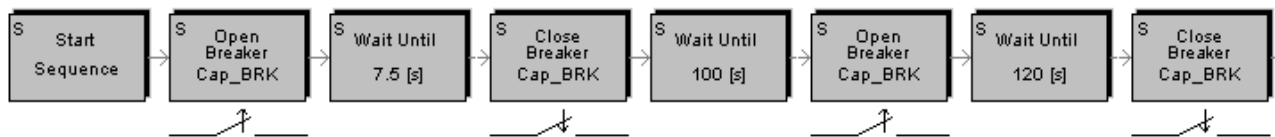


Figure 50: Add two breaker operations to limit current peak at 2nd capacitance charging

Main Simulation parameters:

- Duration: 250 s
- Time step: 100 μ s
- Plot Step : 10 000 μ s

Curves and Analysis:

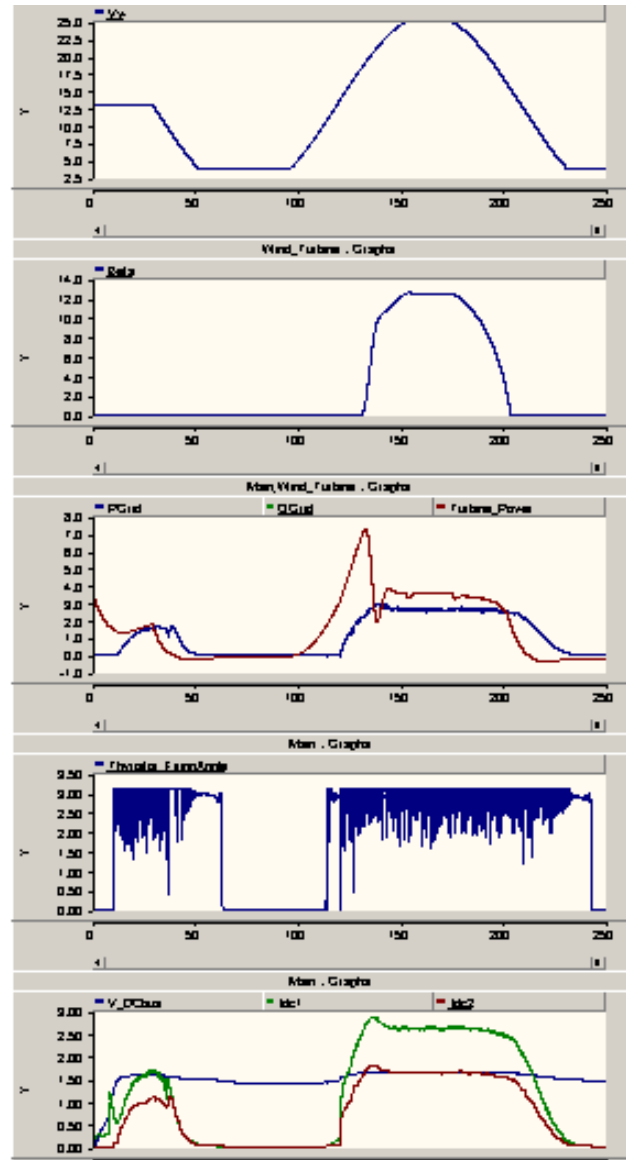


Figure 51: *dyn_pitch.psc* results

The beta regulation is aimed at limiting the turbine power at the rated values. We can see that when the turbine power becomes higher than 3.6MW, beta increases, C_p decreases and the output power decreases. The DC bus regulation is still activated when V_{dv} reaches 1440 V and then, power is delivered to the grid and Alpha varies according to the measured voltage.

When the wind decreases, beta decreases in order to increase the input mechanical power, but when the wind decreases too much, V_{dv} becomes lower than 1440V and the inverter is locked. At the end of the simulation, the turbine power turns negative; this means that the wind turbine is driven by the inertia of the synchronous generator .

10.2 Passive pitch control simulation

In passive pitch control mode, blades are specifically conceived to catch the maximum power until a fixed limit. Above this limit, there are turbulences on the blades and the wind speed is seen as if it was constant for the turbine. Here, the chosen optimal wind speed is 13 m/s. Thus, in this simulation, Beta is set to 0 in order to get the maximum power under 13m/s, above the nominal speed (13 m/s), turbulence is simulated by stopping the wind speed from increasing. This is modeled with a “hard limiter” component defined as shown below:

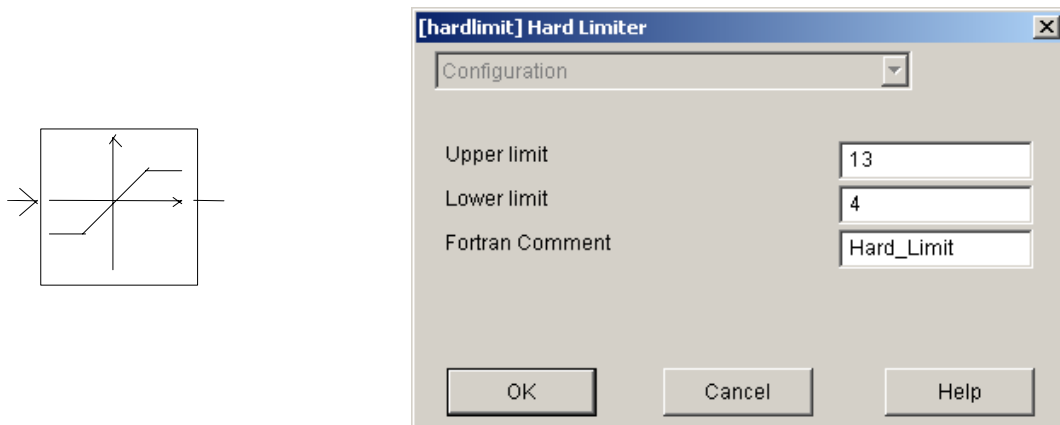


Figure 52: Hard limiter characteristics

The scheme of the wind turbine subpages looks like the following figure:

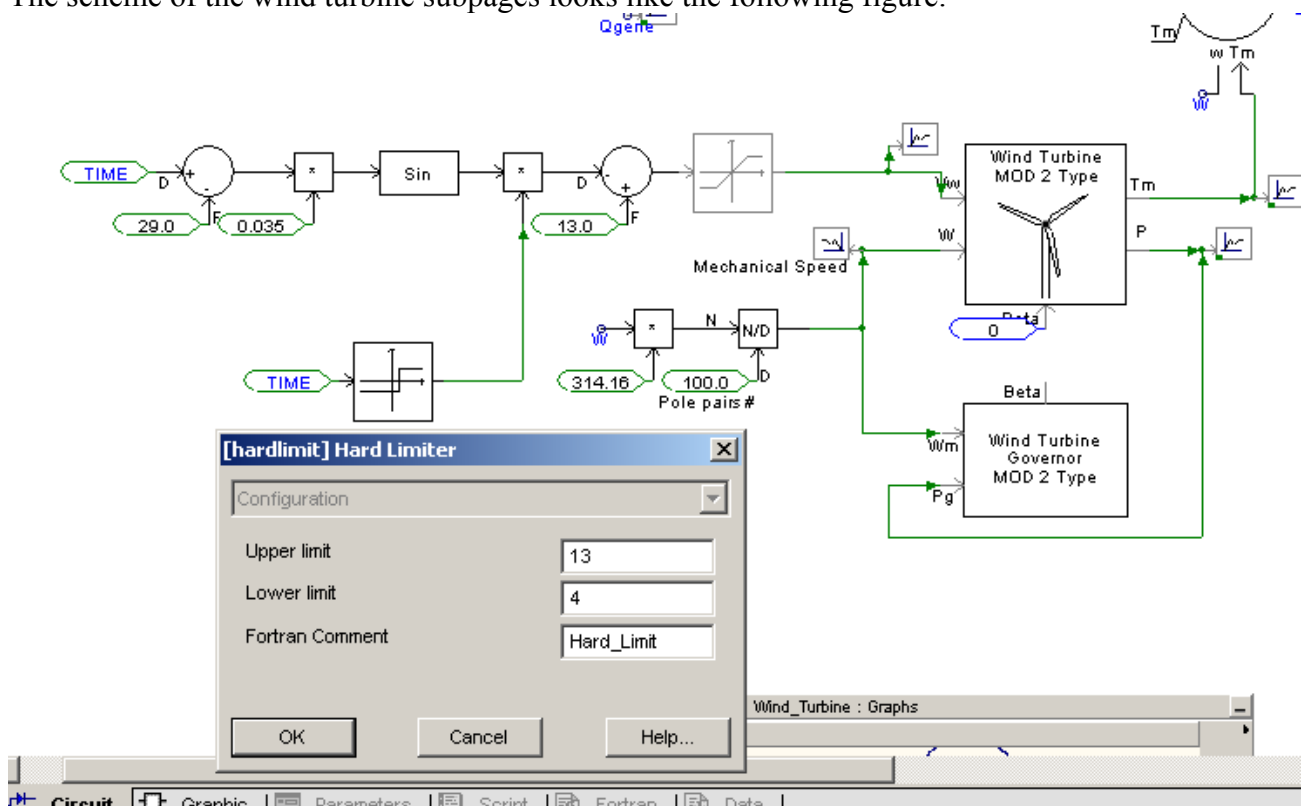


Figure 53: Wind source in passive pitch control

- **Simulation parameters:**

- Duration: 250 s
- Time step: 100 μ s
- Plot Step : 10 000 μ s

- **Curves and Analysis:**

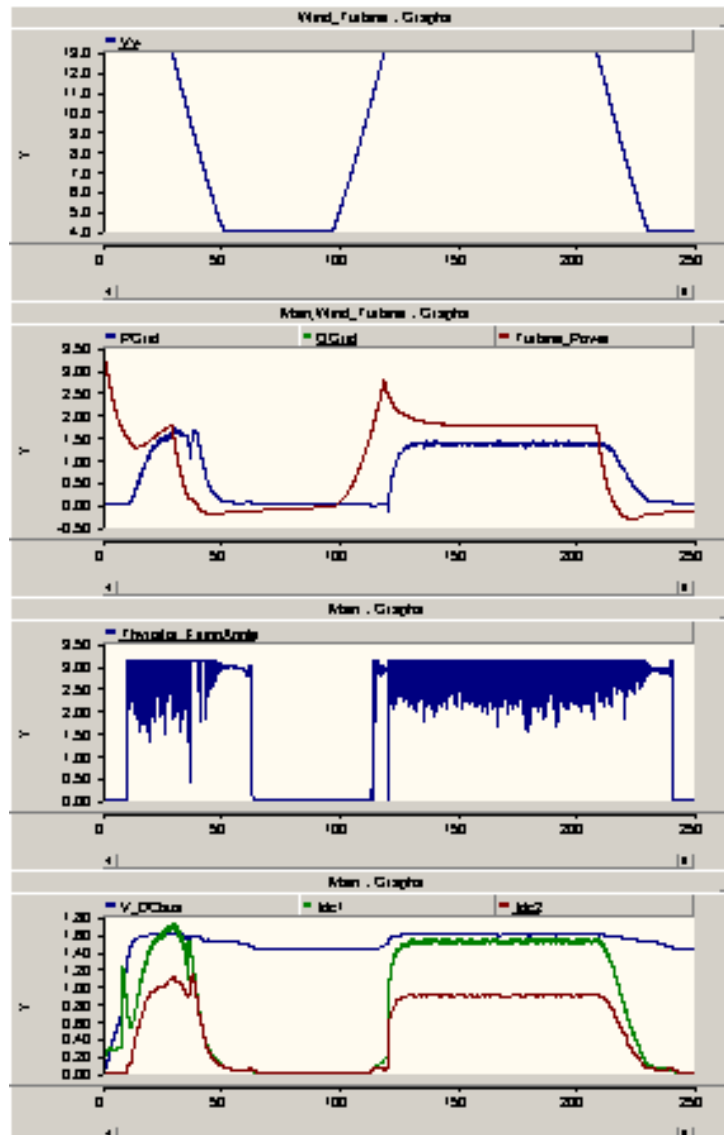


Figure 54: *passive_pitch.psc* results

The wind is modelled with a sinusoidal function between the limits of 4m/s and 13m/s. Compared with the previous simulation, we can observe that the beta regulation does not act, thus, the turbine power coefficient is only a wind speed and a hub speed function.

10.3 Comparison of passive and dynamic pitch control

You can see a comparison of power produced by the same wind turbine generator in passive pitch control mode and dynamic pitch control mode. You can directly perform such comparison in “Livewire”:

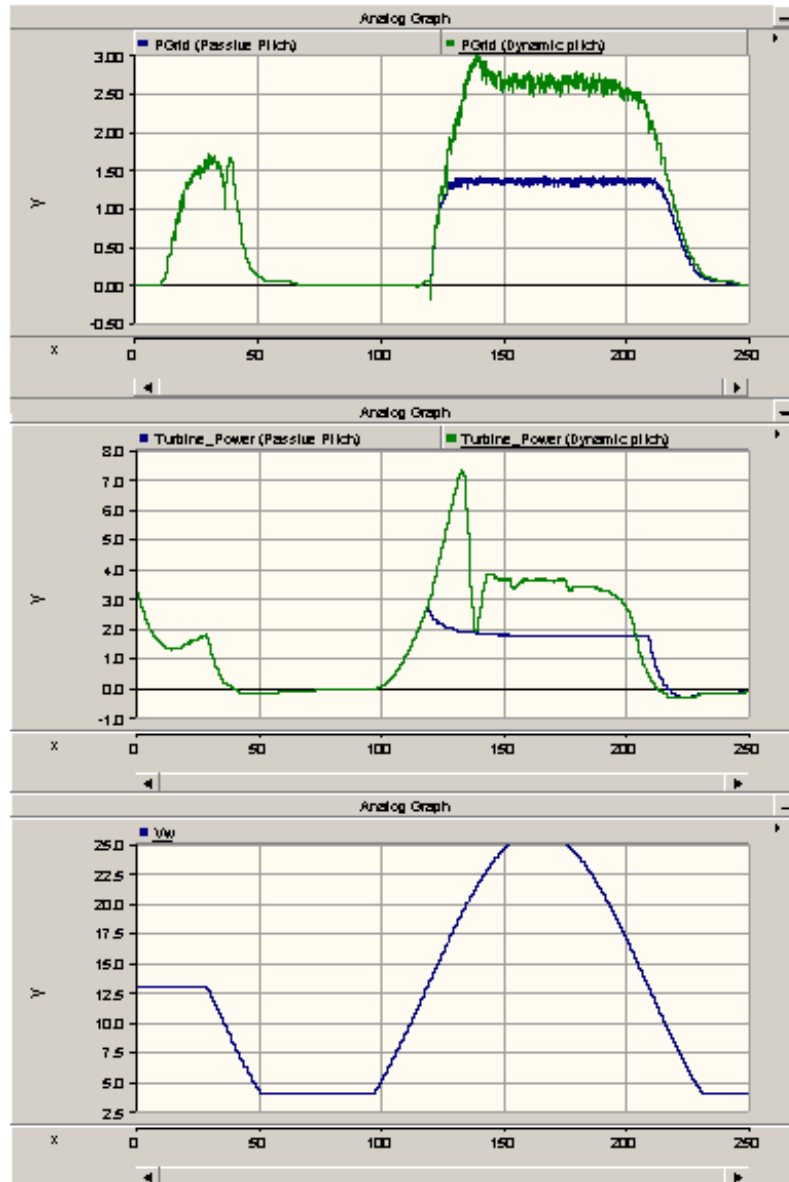


Figure 55: Comparison between pitch control modes

On these curves, it is easy to see that the pitch regulation tries to maintain the turbine power at its rated value (3.6MW) whereas, without dynamic pitch control, the turbine power is not optimized for an entire range of wind speed. Therefore, the energy received in the grid is much larger in dynamic pitch control mode. A wind turbine with dynamic pitch control is more expensive than a passive pitch control, but each time the wind speed is above its rated value, you can get more energy.

These simulations would be a reliable basis for the technical-economic study concerning the choice of the pitch control mode.

11. Wind farm

Previously, we simulated a single 3MVA wind turbine. Now we will connect an entire wind farm composed of 100 wind turbines representing a power of 300 MVA, which equals the rated power of the main source of the distribution grid.

With connection to the grid power, the output power can no longer be neglected. Therefore, two conditions must be respected at the connection point in order not to cause the grid to become unstable:

- the voltage must be 1 p.u. The voltage regulation must be directly inserted at the connection point.
- the frequency of the inverter must be locked on the grid frequency. In general, a Phase Lock Loop (PLL) is used.

11.1 From a single wind turbine to a wind farm

Please open the file **complete_model.psc** and save it as **windfarm.psc**.

11.1.1 Change the structure of the model

1. Delete the 6 pulse bridge thyristor inverter and the capacitors. Then add the two external electrical nodes Vdv+ and Vdv- to obtain the following:

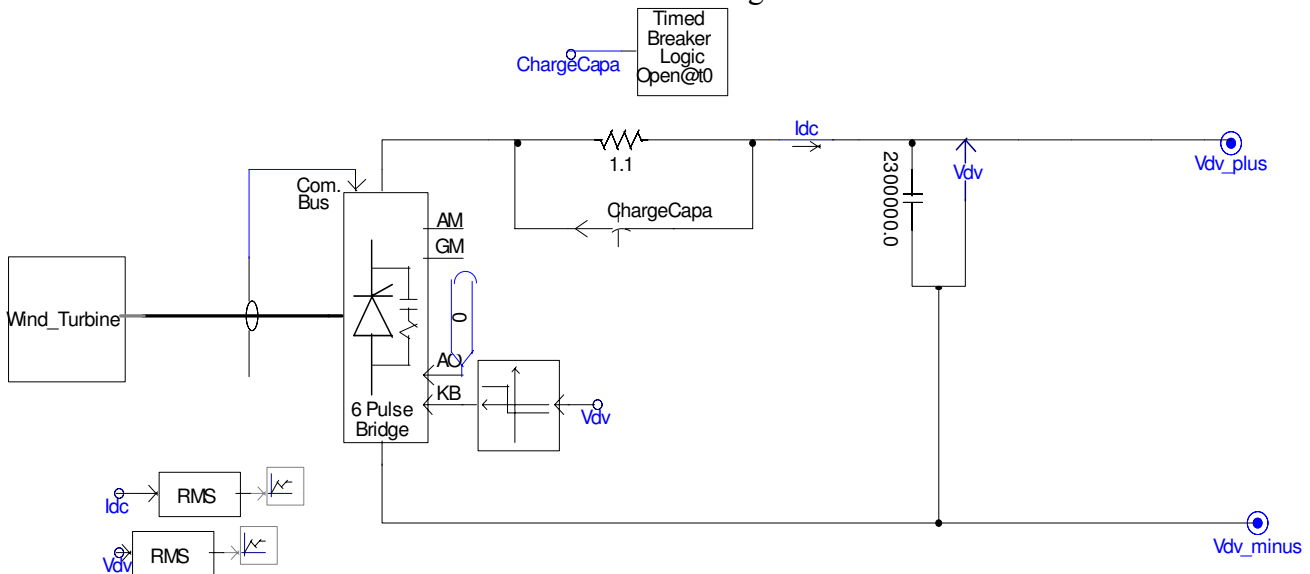


Figure 56: windfarm.psc after 1st step

2. Then, paste the subsystem shown above into one subpage.
3. Return to the main page and design a 6pulse GTO inverter as following (you can copy/paste the structure in the example **statcom_6pls_pwm_sld.psc** furnished with PSCAD) :

The following inverter is a voltage inverter, whereas previously we used a thyristor current inverter. The output voltage is now :

$$U_{fondeff} = V_{dv} * \sqrt{6/\pi} = 1520 * \sqrt{6/\pi} = 1185 \text{ V} \approx 1200 \text{ V}$$

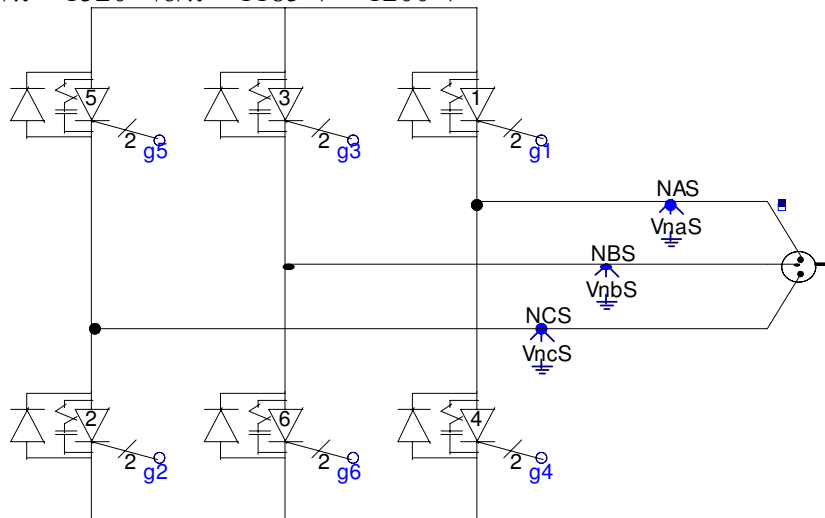


Figure 57: 6 pulse bridge GTO inverter

4. Connect the different elements, the voltage meters and add the capacitor for the reactive power compensation at the secondary side of the transformer. Finally, you should obtain the following schematics:

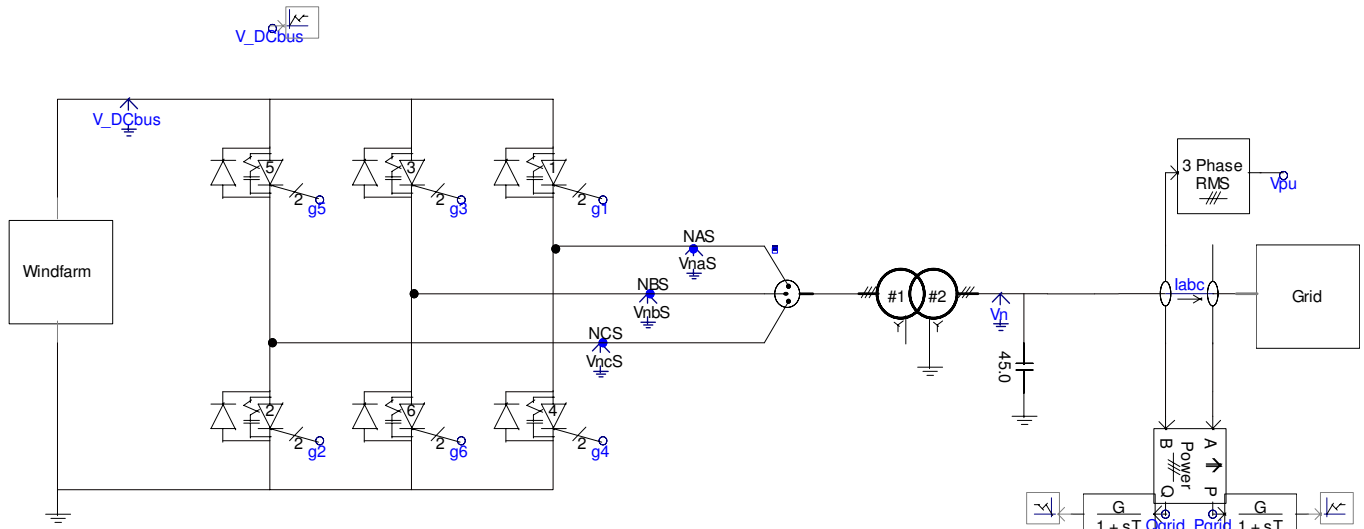


Figure 58: Global view of windfarm.psc

For Vpu RMS measurement:

- Voltage per unit: 12.47kV
- RMS smoothing Time constant: 2s

11.1.2 Modifications in the synchronous generator

With PSCAD, it is very easy to change a single machine into a “multiple machine” equivalent to several identical machines connected in parallel.

It requires only a few changes in the generator’s parameterization:

- In the “configuration” window: Choose: “Machine scaling factor : Yes”
- In the “basic data”, choose “Number of coherent machines: 100”

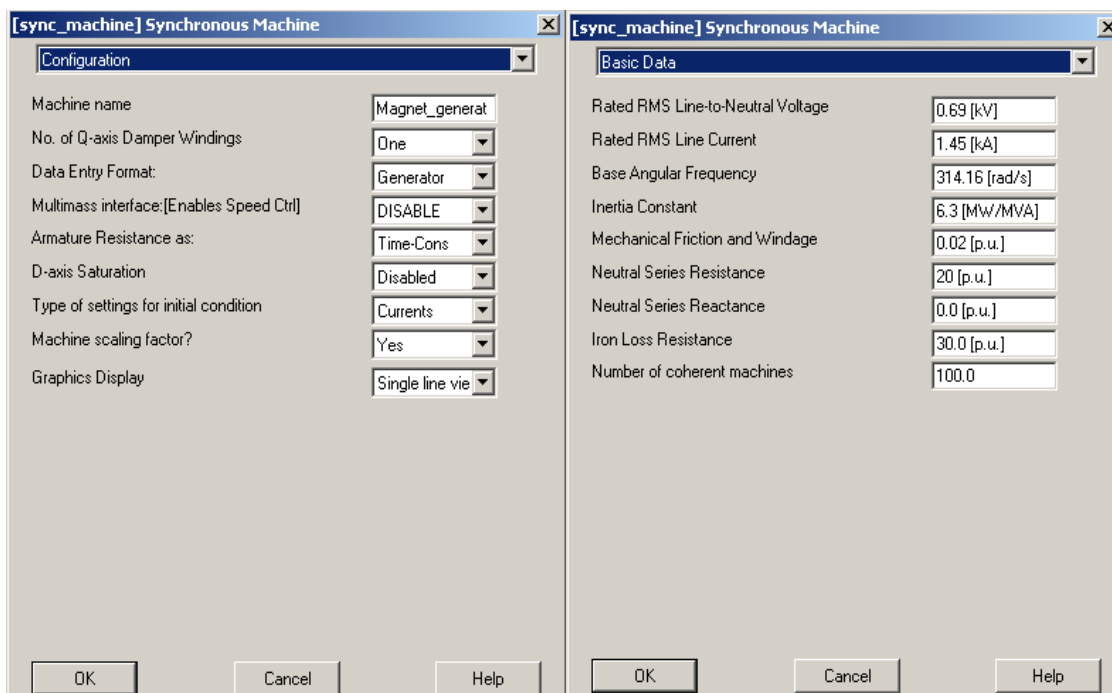


Figure 59: Synchronous generator characteristics

11.1.3 Modifications in the transformer

There are also a few change in the transformer connected to the inverter:

- The apparent power becomes 300MVA
- As explained above, the Primary side rated voltage becomes 0.6 kV

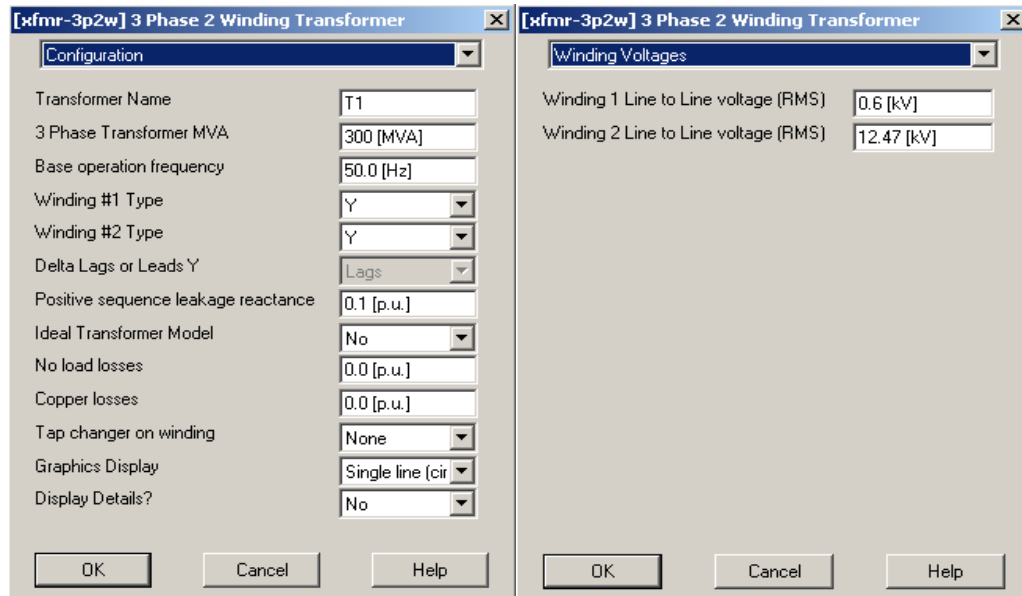


Figure 60: Transformer characteristics

11.1.4 Modifications in the grid

The grid is always the same, but in order to test the voltage regulation, we will force the voltage level to 0.95 p.u. = $0.95 \times 34.5 \cong 32$ KV.

Change the value of the voltage source from 32.5kV to 32 kV as follows:

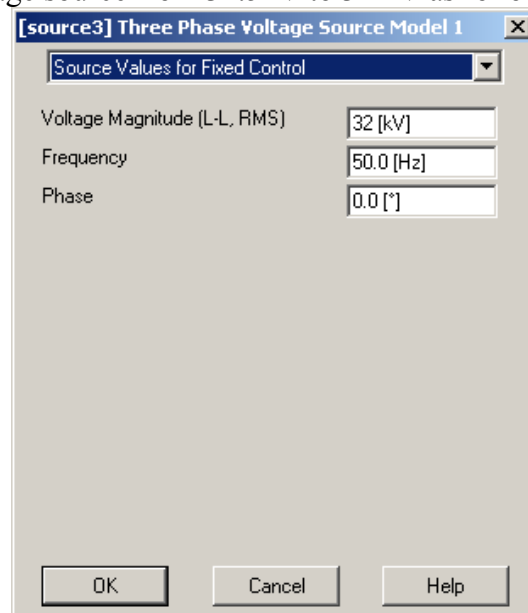


Figure 61: Grid voltage source characteristics

Note:

You do not have to change the rated values of the voltage source, only the actual values.

11.2 PWM Regulation drives

You can begin with the PWM drive shown in the example **statcom_6pls_pwm_sld.psc** and copy/paste the components to adapt them to our model.

11.2.1 Principles

The voltage will be regulated through a PWM drive in order for the voltage at the connection point to equal 1 p.u. (1pu = 34.5kV). To see the effect of this regulation, the voltage magnitude of the main voltage source of the grid is set to 0.95 p.u. = 32kV, as shown previously.

The following parts will detail the regulation device.

The drive of our device can be divided into 3 parts:

- Generation of the triangular waveform
- Generation of the reference
- Generation of the firing pulses of the 6 GTO of the inverter

11.2.2 Generation of the triangular waveform

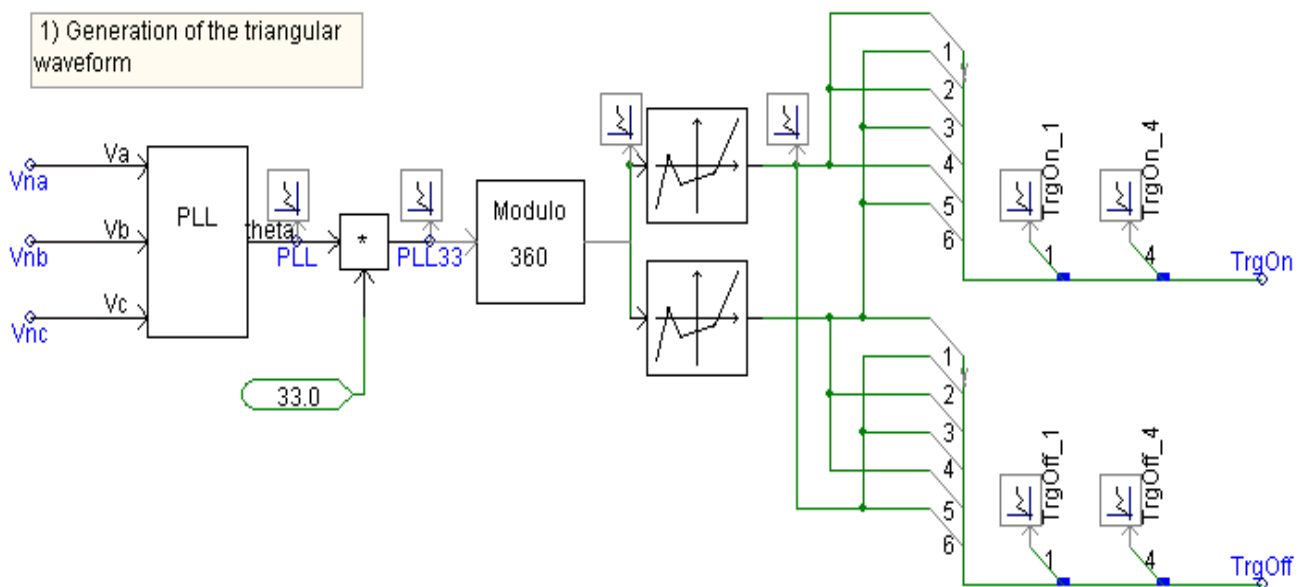


Figure 62: Triangular waveform regulation

This part of the drive system is composed of:

- A **Phase Locked Loop** (PLL), available in the master library folder “CSMF” and parameterized as shown below:

The dialog box titled "[tvekta] Phase-Locked Loop" has a "Configuration" tab. It contains the following parameters:

Proportional gain	50
Integral gain	500
Base Volts	10000.0 [V]
Base Frequency	50.0 [Hz]
Number of outputs	n=1
Angle input/output mode	Degrees
Offset angle to PLL (rad/deg as per Pm)	0.0
PLL Shadows err for < TREL	0.05

Buttons: OK, Cancel, Help

Figure 63: PLL characteristics

- 2 **non linear transfer characteristic** components available in the master library folder “CSMF” and parameterized as shown below:
 - Generation of the TrgOn signal:

The left dialog box shows the "Configuration" tab with "Number of coordinates" set to 4. The right dialog box shows the "Transfer Characteristic" tab with the following data:

x	y
x1: 0.0	y1: 0.0
x2: 90.0	y2: 1.0
x3: 270.0	y3: -1.0
x4: 360.0	y4: 0.0
x5: 0.0	y5: 0.0
x6: 1.0	y6: 1.0
x7: 2.0	y7: 2.0
x8: 3.0	y8: 3.0
x9: 4.0	y9: 4.0
x10: 5.0	y10: 5.0

Buttons: OK, Cancel, Help

Figure 64: 1st Non linear transfer function characteristics

- Generation of the TrgOff signal:

The left dialog box shows the "Configuration" tab with "Number of coordinates" set to 4. The right dialog box shows the "Transfer Characteristic" tab with the following data:

x	y
x1: 0.0	y1: 0.0
x2: 90.0	y2: -1.0
x3: 270.0	y3: 1.0
x4: 360.0	y4: 0.0
x5: 0.0	y5: 0.0
x6: 1.0	y6: 1.0
x7: 2.0	y7: 2.0
x8: 3.0	y8: 3.0
x9: 4.0	y9: 4.0
x10: 5.0	y10: 5.0

Buttons: OK, Cancel, Help

Figure 65: 2nd Non linear transfer function characteristics

- A modulo block : This “modulo” function is not directly available in the master library. Copy it from **statcom_6pls_pwm_sld.psc** into the definitions of your project (in the project manager use the functions : **Copy/Paste definition**). Once it is done and appears in the project manager, right click on the definition and then create the instance and copy it to your project. This component will now belong to your project:

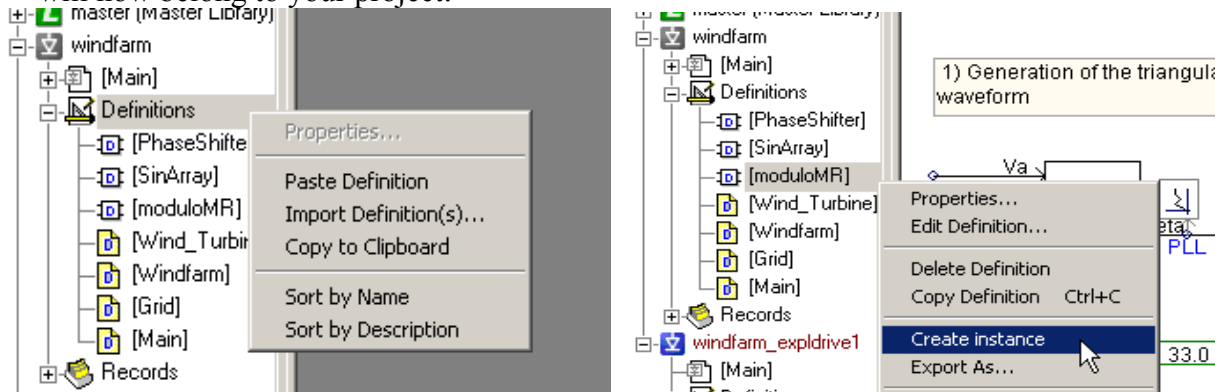


Figure 66: Modulo block importation

Configure the MODULO as follows:

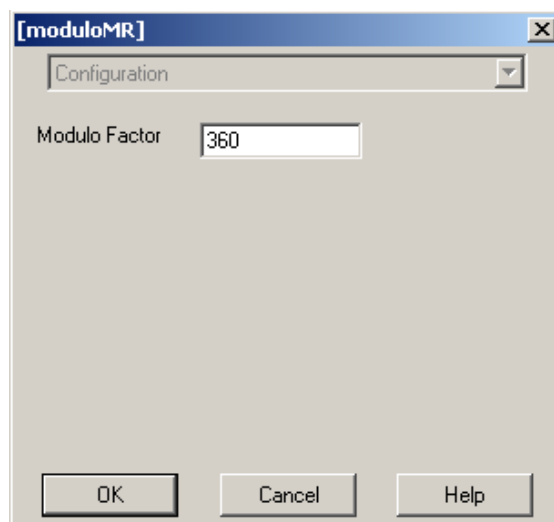


Figure 67: Modulo characteristics

The output of the PLL is a signal varying between 0 and 360° synchronized on the 3phase voltages (Vna,Vnb,Vnc) at the frequency of the system. This signal is multiplied by 33 and the modulo function gives the same signal at a carrier frequency equal to 33 times the fundamental frequency. Each period of the carrier frequency is transformed in a triangular period with amplitude from -1 to 1 with the transfer function. The signal is separated into two complementary arrays of 6 triangular signals: TrgOn (which will generate the on firing pulses) and TrgOff (which will generate the Off firing pulses).

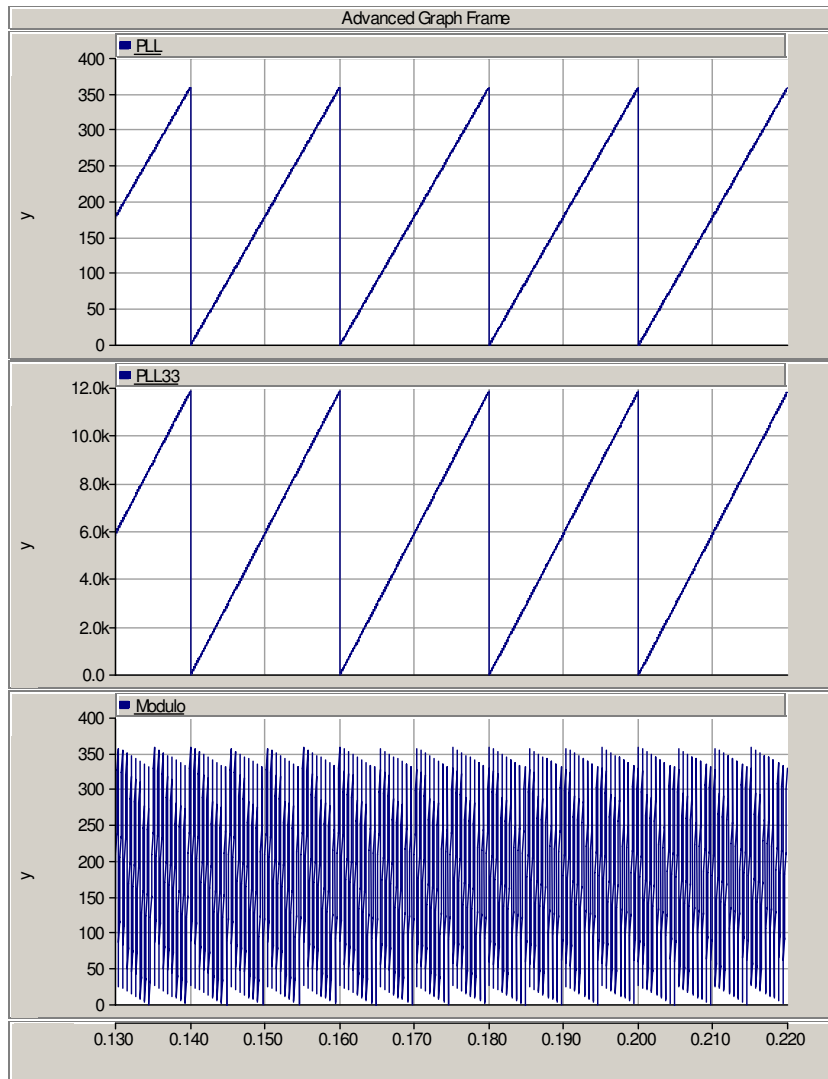


Figure 68: PLL output

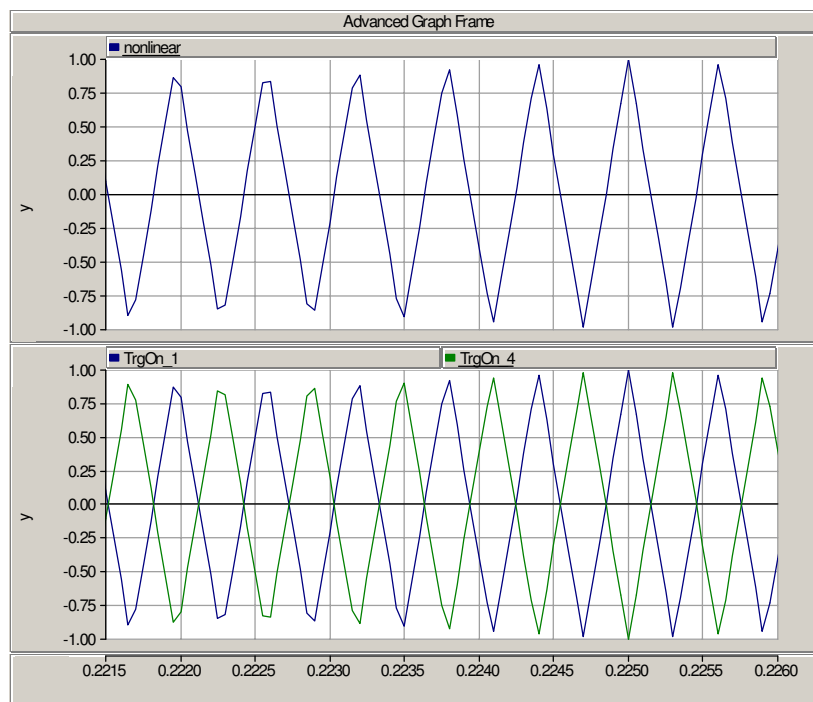


Figure 69: Generated triangular waveform

11.2.3 Generation of the reference

2) Generation of the reference

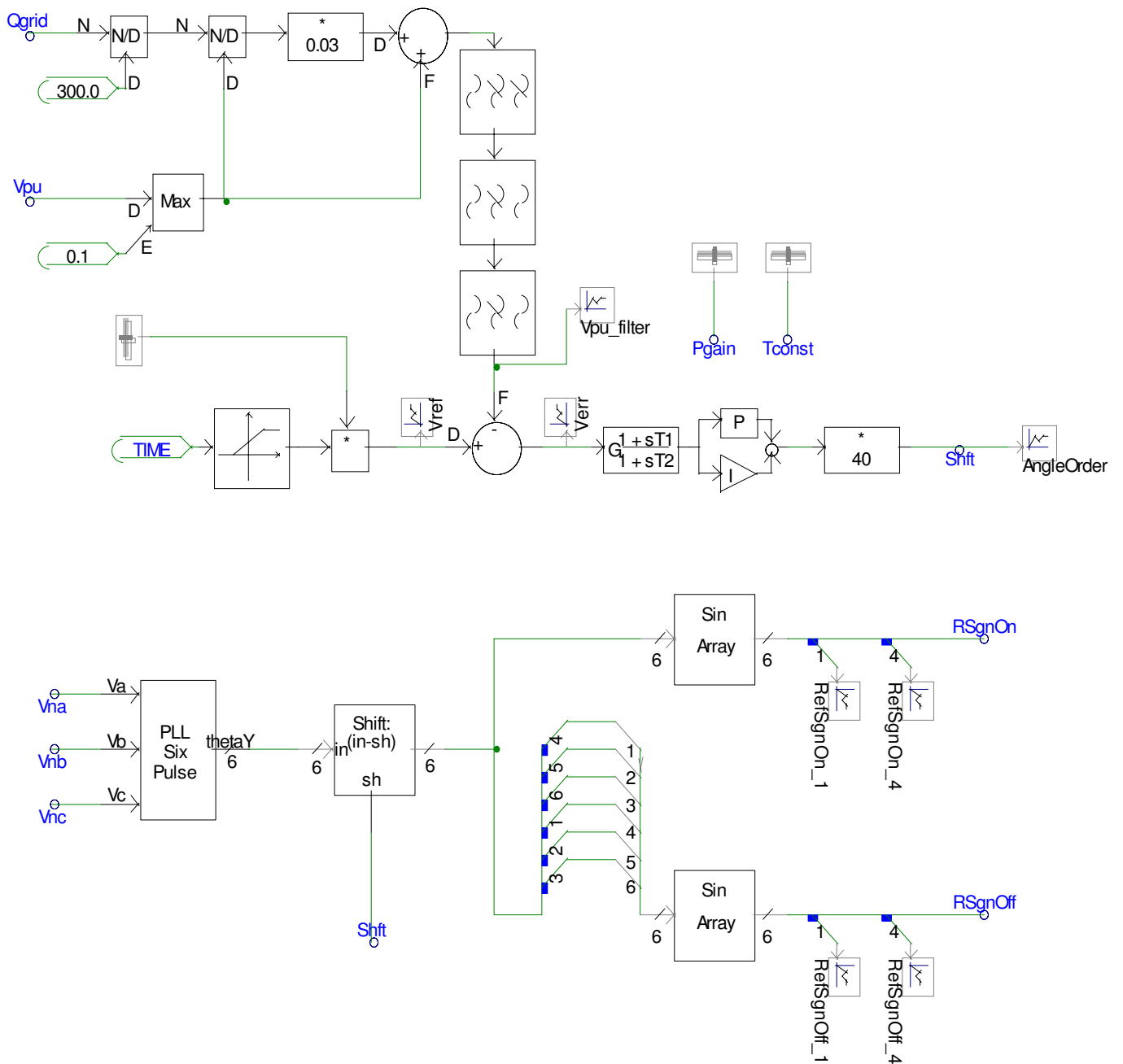


Figure 70: Reference signal generation

This part of the drive system is composed of:

- Three filters called «**second order transfer functions**» available in the master library/**CSMF** and parameterized as shown below.
 - The first filter comes from the inputs Qgrid and Vpu:

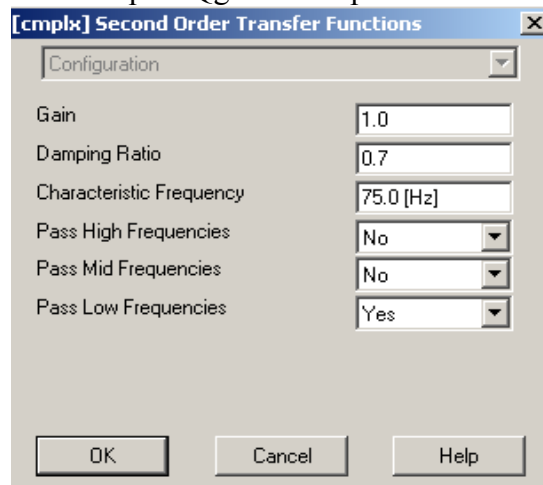


Figure 71: 1st filter characteristics

- Second filter:

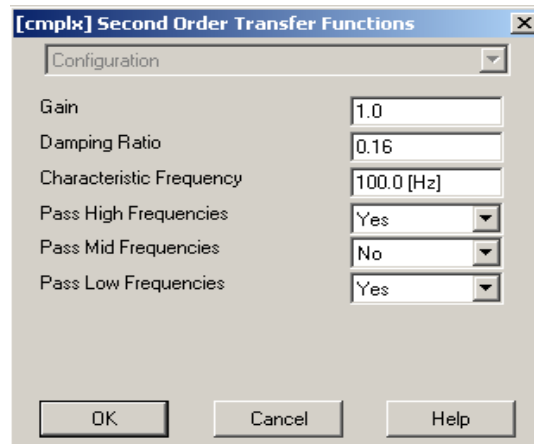


Figure 72: 2nd filter characteristics

- Third Filter:

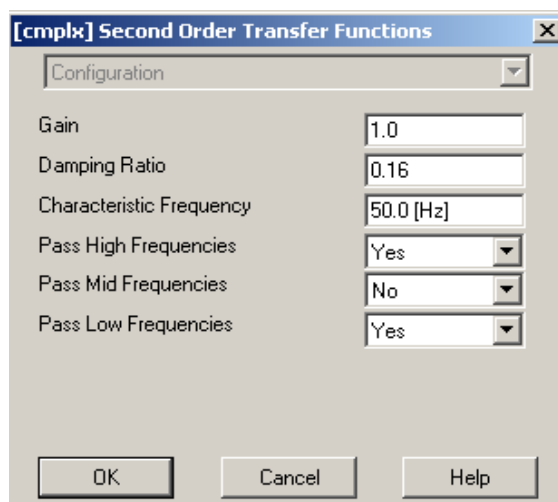


Figure 73: 3rd filter characteristics

- An **up-ramp transfer function** available in the Master library/CSMF:

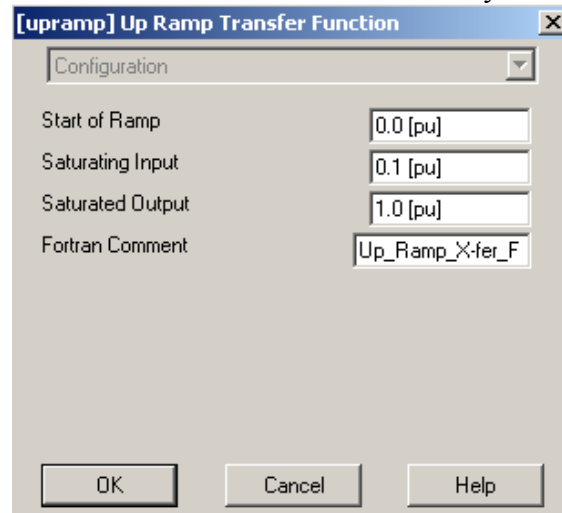


Figure 74: Up-ramp transfer function characteristics

- A **lead_lag function** available in the Master library/CSMF:

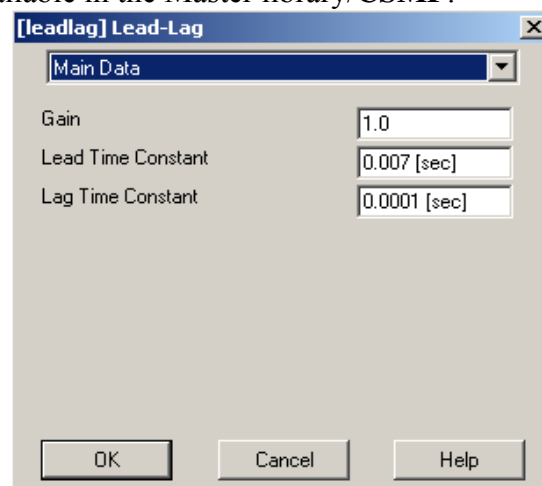


Figure 75: Lead-lag function characteristics

- A **PI controller** available in the Master library/CSMF:

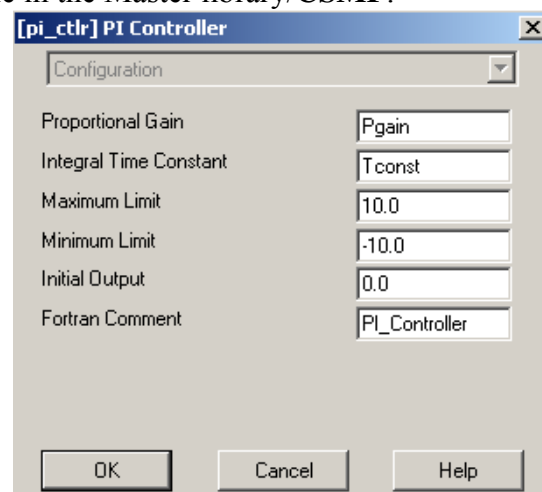
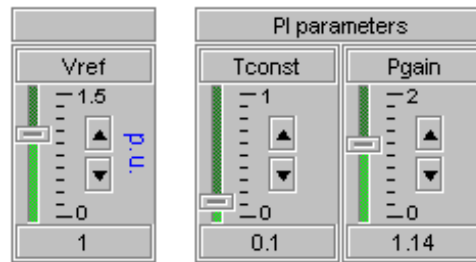


Figure 76: PI controller characteristics



The gain and the Time constant of the Pi controller and the level of the voltage reference will be controlled with the sliders shown above.

- A **Phase-Locked Loop** six pulse available in the Master library/CSMF:

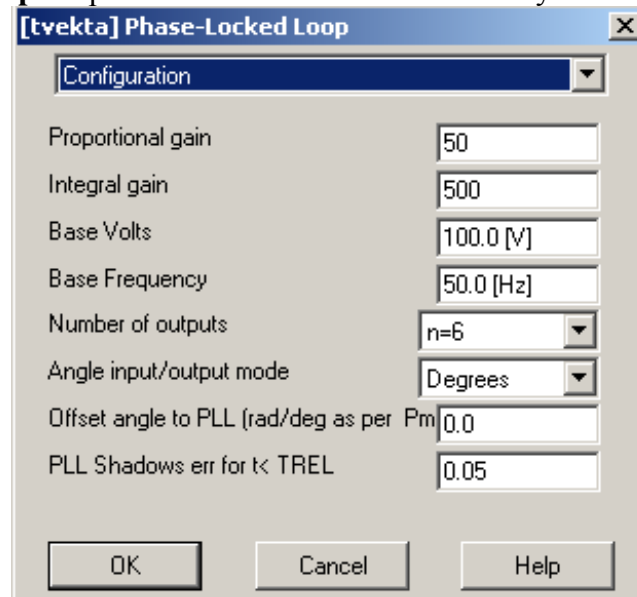


Figure 77: PLL characteristics

- A component called «**Phase_shifter**» which you can copy from the example **statcom_6pls_pwm_sld.psc**. As for the “modulo” component, you will have to copy/paste the definition and create the instance from the project manager.
- A component called «**Sin_array**» which you can copy from the example **statcom_6pls_pwm_sld.psc**. (You will have to copy/paste the definition and create the instance from the project manager).

An error signal Shift is produced from the reference order of the voltage at the connection in Per unit and the measured 3phase RMS voltage at the connection point.

Then, this error is subtracted from the six outputs of the PLL, which are 6 signals synchronized on the measured output voltage of the inverter with a 60° phase difference between each one. These signals are organized in order to fit with the GTO arrangement on the bridge and we obtain the reference signals :

- RsgnOn for the ON firing pulse
- RsgnOff for the Off firing pulse.

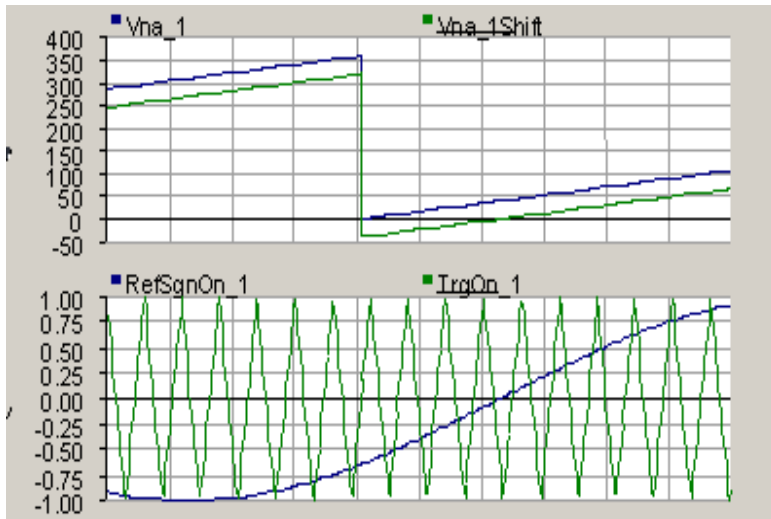


Figure 78: Reference signal generated

Vna_1 is one of the output of the PLL.

Vna_1Shift is Vna_1 subtracted with the angle order (which is a function of the error between the reference voltage reference and the real value).

RefSgnOn_1 is the sinus of Vna_1Shift, this is the reference.

11.2.4 Generation of the firing pulses for the GTO inverter

The interpolated firing pulses component is the component semi-conductor drive component in PSCAD.

Its inputs are the reference signals and the triangular waveforms (generated above) and its outputs are the firing pulses that open and close the switches (Thyristor GTO, IGBT) according to the comparison of the two input signals.

The interpolation method of PSCAD requires using this exact component to generate the correct gate signals (g1,g2,g3,g4,g5,g6), which are arrays of two values. It is available under « **Master library/HVDC-FACTS** ».

3) Generation of the firing pulses

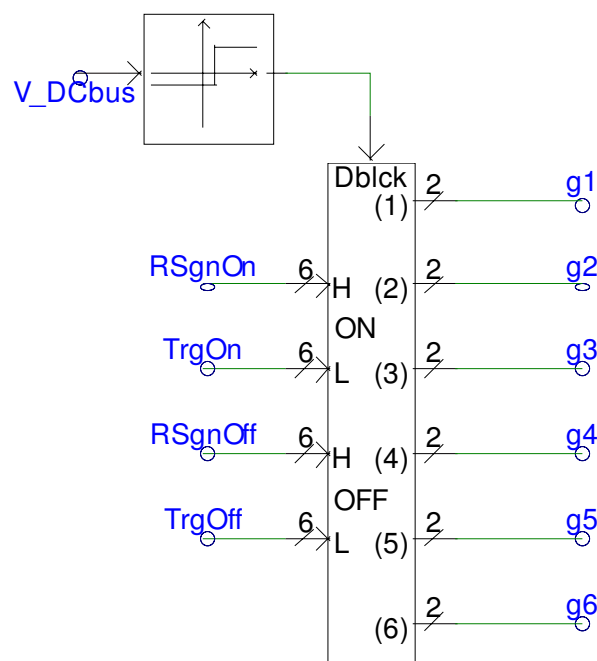


Figure 79: Interpolated firing pulse for GTO inverter drive

The measure of the voltage V_DCbus blocks and unblock the signals.
Please configure this component as follows:

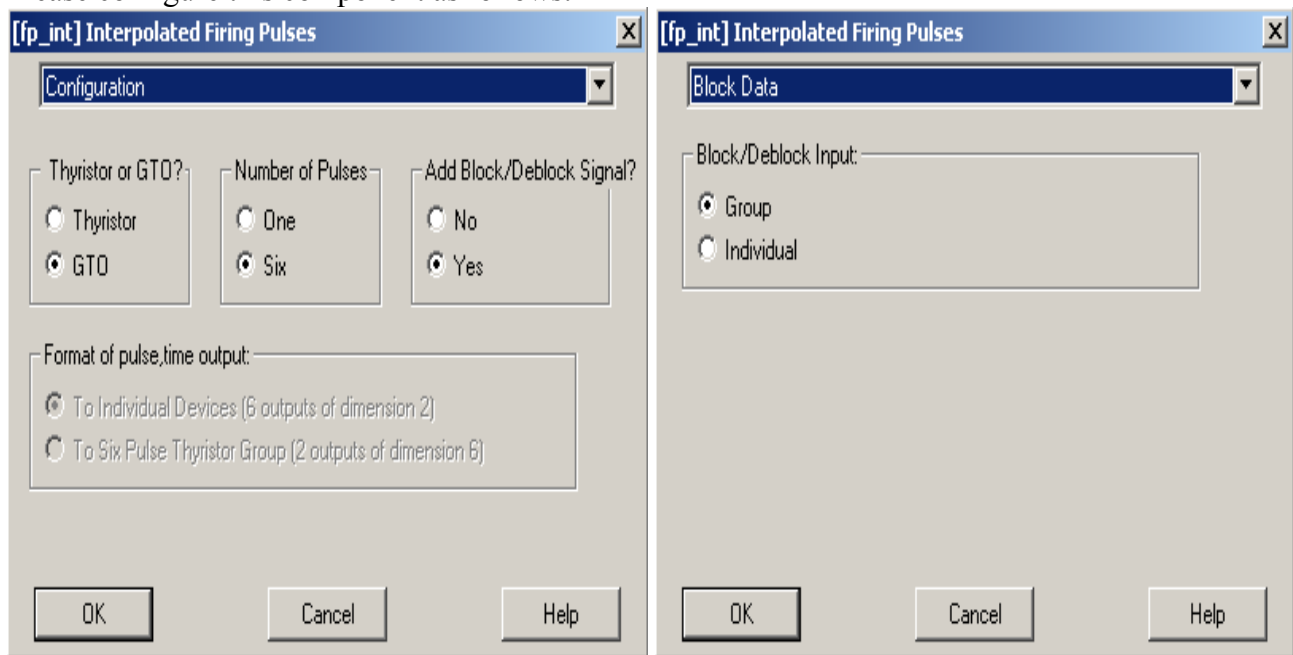
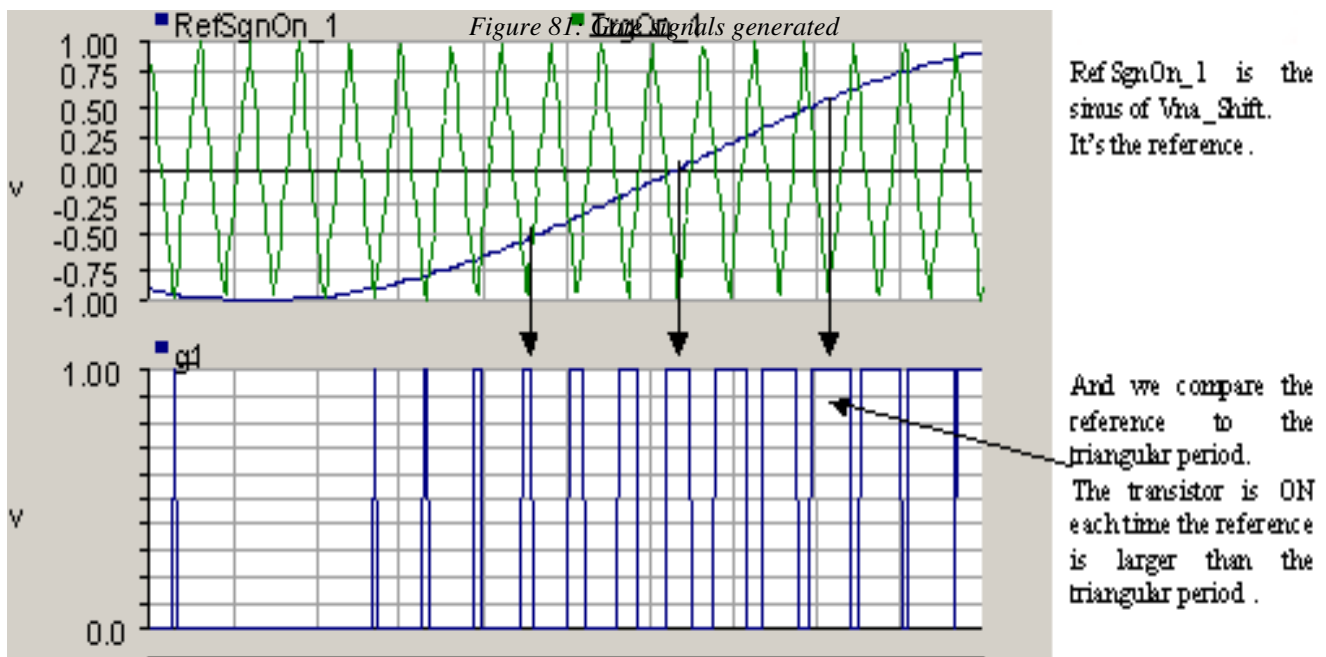


Figure 80: Interpolated Firing pulse characteristics

The input and output signals look like the following:



11.3 Simulation

- **Simulation parameters:**

- Duration: 70 s
- Time step: 100 μ s
- Plot step: 2000 μ s
- Startup method: Standard

Variable Name	Scale Factor	Rated Voltage for Per Unitizing	RMS Smoothing Time constant
Psource, Qsource	300	X	2
P2,Q2	1	X	2
P4,Q4	1	X	2
Vsource	1	X	2
Vconnection	1	12.47	2

Table 15: Metering characteristics for measured quantities

- **Curves and Analysis:**

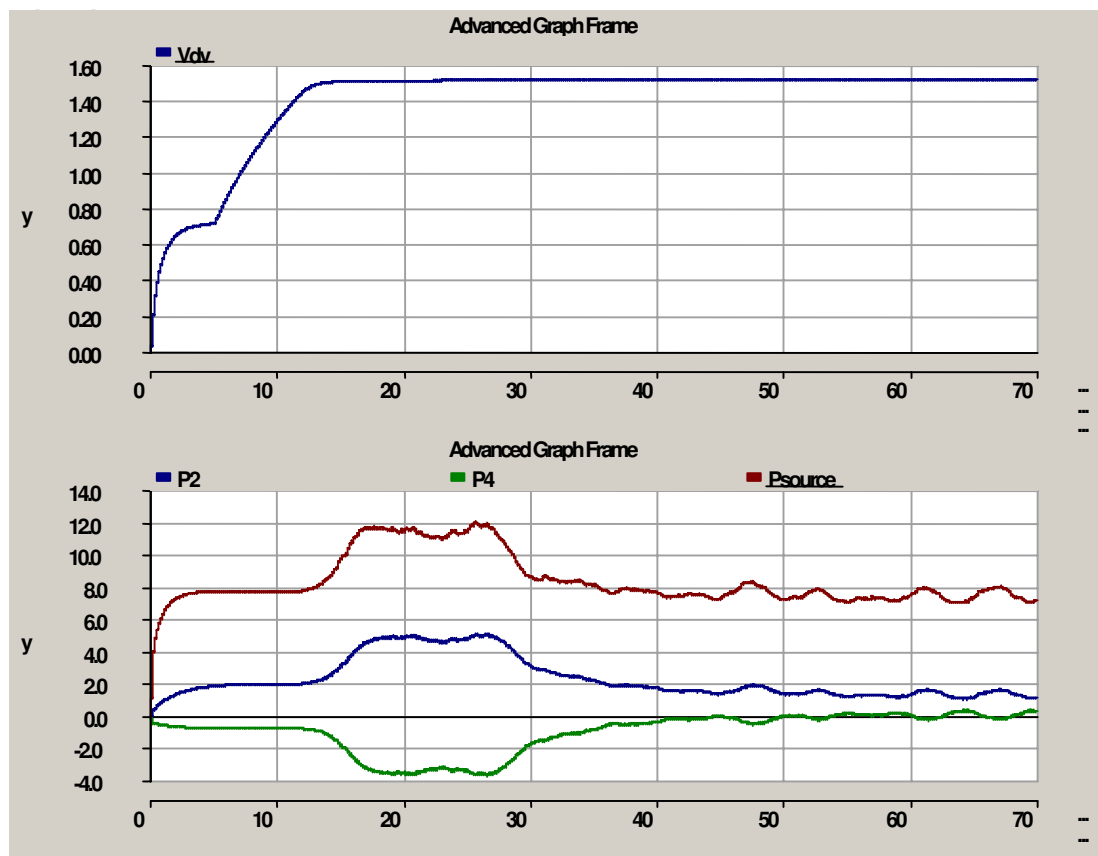


Figure 82: Windfarm.psc results

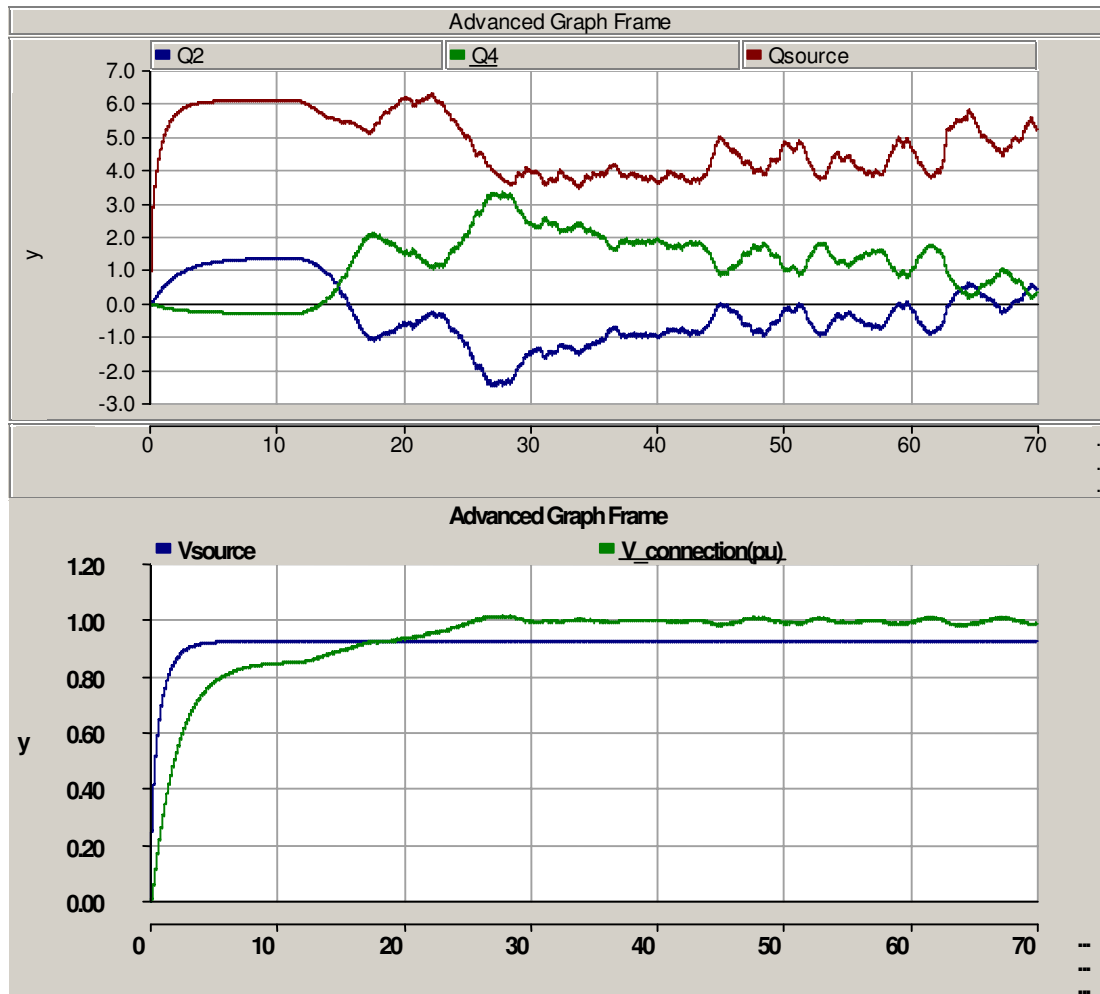


Figure 83: Windfarm.psc results

At $t = 5\text{s}$ the resistance is shunted, thus the voltage drops. When V_{dv} reaches 1520V, the regulation starts. Before the starting of the regulation, the connection point voltage (V_4) is imposed by the grid. Afterward, the regulation set it to 1pu. The wind farm produces 3.5 MW to maintain the voltage at 1pu (P4).

PART D: APPENDIX

12. References

- **IEEE articles:**

- [1] P.M. Anderson, Anjan Bose, Stability Simulation Of Wind Turbine Systems, Transactions On Power Apparatus And Systems. Vol. PAS 102, No. 12, December 1983, pp. 3791-3795.
- Grid friendly connection of constant speed wind turbines using external resistors: Torbjorn Thiringer; IEEE Transactions on energy conversion Vol 17, N°4; December 2002
- Direct Methods For transient stability assesment in power systems comprising controllable Series Device; Gabrijel/Mihalic; Vol 17, N°4; November 2002
- Improving Voltage Disturbance Rejection for Variable-Speed Wind turbines; Saccomando/Svensson/Sannino; Vol 17, N°3; September 2002
- PSCAD/EMTDC based simulation of a wind-diesel conversion scheme; Kannan Rajendiran; Curtin University of Technology, Perth, Australia; drdeadx@hotmail.com; IEEE 2000

- **Other articles:**

- Modelisation de générateurs éoliens à vitesse variable connectés à un bus continu commun/Modelling of variable speed wind generators jointly connected to continuous bus; El Aïmani/François/Robyns (L2EP); FIER 2002; <http://www.fst.ac.ma/fier/59.PDF>
- Eolienne lente de proximité, conception, performances, technologie et application; slow rotating wind turbine for proximity applications, criteria of design expected performances technology and applications; Bouly/Defois/Faucillon/Billon; FIER 2002; <http://www.fst.ac.ma/fier/57.PDF>
- Control issues of a permanent magnet generator variable speed wind turbine: Chaniotis/Papathanassiou/Kladas/Papadopoulos (National Technical University of Athens); <http://www.cc.ece.ntua.gr/~achan/Kataskeues/MED02-107.pdf>

- **Manuals:**

- Eoliennes et aérogénérateurs. Guide de l'énergie éolienne; Guy Cunty; Edisud

